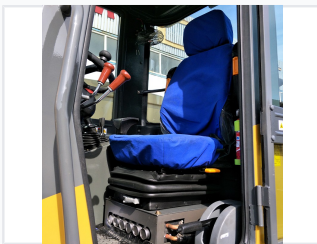


## 2.5 Ton Telescopic Boom Loader

This 2.5-ton telescopic boom loader is designed for versatile material handling in construction and agricultural applications. Featuring a telescopic boom that extends reach and lifting height, it enhances material loading and unloading in confined spaces.



### ADDITIONAL IMAGES



### Product Overview

#### High-Efficiency Telescopic Loader

This 2.5-ton telescopic boom loader is engineered for versatility and power in both construction and agricultural environments. Featuring a robust, vibration-absorbing cabin and intuitive pilot joystick controls, it is designed to maximize operator comfort and productivity during long shifts. The integrated quick-hitch system allows for rapid attachment changes, ensuring that the machine is always equipped for the specific requirements of the job site.

### Technical Specs

Load Capacity	2.5 ton
Engine Compatibility	Perkins, Yanmar, Kohler, Xinchai

### Operational Features

Control System	Ergonomic pilot joystick for sensitive and accurate maneuvering
Quick Hitch System	Yes

### Operator Cabin

#### Cabin Amenities

- Vibration absorbing seat
- Panoramic floor-to-ceiling tinted glass
- Rear-view camera with large display
- Easy-access door steps