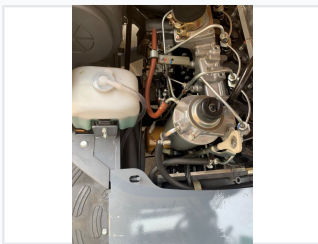


2.5 Ton LPG Forklift Truck

This 2.5 ton LPG forklift truck is designed for efficient material handling in diverse industrial settings. Its compact size allows for maneuverability in confined spaces.



ADDITIONAL IMAGES



Overview

High-Efficiency 2.5 Ton LPG Forklift

This 2.5 Ton LPG forklift is a radical innovation designed to meet the rigorous demands of modern warehouse management and driver comfort. Powered by a clean-burning LPG engine, it offers high efficiency and energy savings while maintaining exceptional durability and reliability. The design features a uniquely improved uploading system and an ergonomic cab to ensure world-class performance in various industrial applications.

Core Performance



Key Performance Metrics

2000 kg
Rated Capacity

3000 mm
Max Lifting Height

17 km/h
Travel Speed (Loaded)

500 mm/s
Lifting Speed (Loaded)

Engine & Powertrain



Engine Specifications

Feature	Specification
Power Unit	LPG/Gasoline
Engine Model	K21
Rated Power	31.2 kw / 2250 rpm
Rated Torque	143.7 n-m / 1600 rpm
Cylinders	4
Displacement	2.06 L
Fuel Tank Capacity	70 L

Operator Comfort & Safety



Safety & Ergonomics

- New suspension system with adjustable seat to reduce fatigue
- Expanded step area (1.5x larger) with lower step height
- Embedded LCD instrument with neutral start protection
- Double protection type brake lever to prevent misuse
- Advanced single chain design for enhanced front view
- Plastic ceiling protection for safe operation in rainy conditions
- Large double muffler for superior noise reduction

Technical Dimensions



Physical Dimensions

Dimension	Value
Overall Length (without fork)	2605 mm
Overall Width	1150 mm
Overhead Guard Height	2090 mm
Fork Size (LxWxT)	1220 x 122 x 40 mm
Turning Radius	2170 mm
Truck Weight	3310 kg
Load Center	500 mm

Maintenance & Service

Maintenance Features

- Removable side cover for easy inspection and repairs
- Integrated control box for fuses and relays
- Aluminum heat sink radiator for significantly enhanced cooling
- 12-month or 2000-hour comprehensive warranty
- Global spare parts support network

Operational Capabilities

Maneuverability & Handling

Parameter	Loaded	Unloaded
Lifting Speed	500 mm/s	550 mm/s
Lowering Speed	480 mm/s	450 mm/s
Travelling Speed	17 km/h	19 km/h
Max Gradeability	21%	-
Mast Tilting (Fwd/Bwd)	6 deg	12 deg

Compliance & Quality

Standards & Certifications

ISO 9001:2015, EN ISO 12100:2010, EN ISO 3691-5:2014, CE Certified