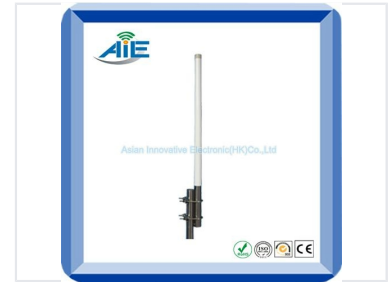


# 2.4-2.5GHz 15dBi Outdoor Omni-Directional Fiberglass Antenna

This outdoor omni-directional fiberglass antenna provides high gain and good transmission quality with wide coverage. It is designed for easy installation and wind resistance.



## Product Overview

### High-Performance Outdoor Connectivity

This 15dBi outdoor omni-directional fiberglass antenna is engineered for robust performance in demanding environmental conditions. Designed for the 2.4-2.5 GHz frequency band, it provides high gain to significantly enhance signal strength and extend coverage range for wireless networks. Its durable fiberglass construction ensures long-term reliability for outdoor deployments, making it an ideal choice for Wi-Fi and WLAN infrastructure.

## RF Performance

### Gain

**15 dBi**

Gain

### Beam Width

| Plane      | 3dB Beam Width |
|------------|----------------|
| Horizontal | 360°           |
| Vertical   | 10.5°          |

|                 |               |
|-----------------|---------------|
| Frequency Range | 2400-2483 MHz |
| VSWR            | 1.5 max       |
| Impedance       | 50 ©          |

## Mechanical & Environmental

|                      |               |
|----------------------|---------------|
| Housing Material     | Fiberglass    |
| Dimensions           | !20x 1500 mm  |
| Rated Wind Velocity  | 60 m/s        |
| Lightning Protection | Direct Ground |

## Connectivity

### Connector Options

N Female • BNC • TNC • SMA

### Cable Specifications

- Type: RG58
- Length: 30 cm

### Maximum Power Input

100 W

## Certifications

### Compliance

CE, ROHS, ISO, SGS