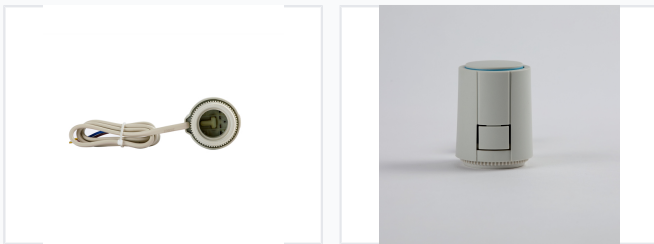


230V Normally Closed Thermal Actuator for Floor Heating

This 230V thermal actuator is designed for floor heating systems. It uses a normally closed configuration to regulate temperature.



ADDITIONAL IMAGES



Product Overview



Thermal actuator mounted on a floor heating manifold for water flow regulation.

High-Efficiency Thermal Actuator

This 230V normally closed thermal actuator is designed for precise temperature control in underfloor heating and cooling systems. It operates by controlling thermostatic valves on manifolds to optimize energy efficiency and maintain consistent comfort. Featuring a compact design and maintenance-free operation, it is an essential component for modern residential and commercial climate control solutions.

Key Performance Metrics

Key Performance Metrics

230 V

Operating Voltage

2 W

Power Consumption

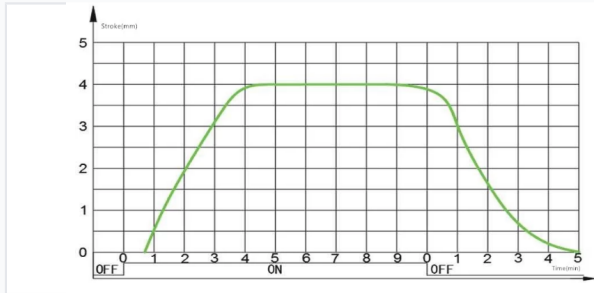
110 N

Actuating Force

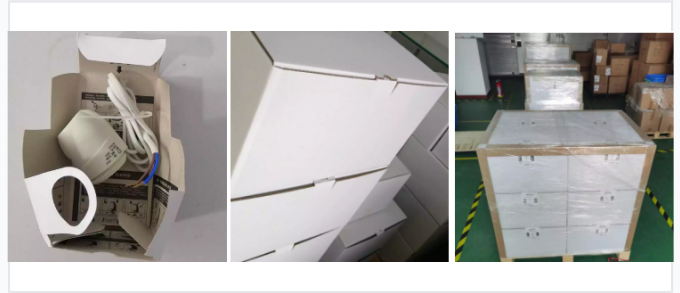
4.5 mm

Max Stroke

Technical Specifications



Performance graph showing the actuator stroke reaching 4mm within 4 minutes of operation.



The actuator in its default Normally Closed (NC) position.

Technical Details

Parameter	Value
Type	Normally Closed (NC)
Inrush Current	Max 550mA
Running Time	3-5 minutes
Connection Size	M30 x 1.5mm / M28 x 1.5mm
Cable Length	800mm
Working Temperature	-5°C to 60°C
Storage Temperature	-25°C to 60°C

Design & Construction

Materials & Build

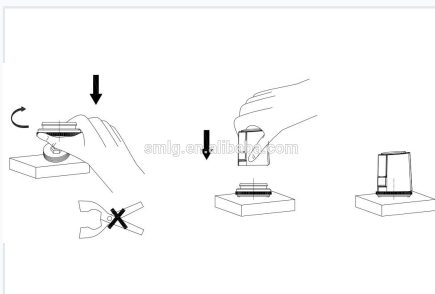
- Housing Material: PA66 + 30% Glass Fiber
- Internal Component: Brass
- Element: Wax thermostatic element
- Protection Class: IP54

Features

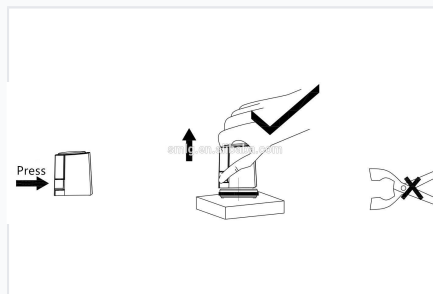
Key Features

Compact Size, 360° Installation, Low Power Consumption, Noiseless Operation, Maintenance-Free, Snap-on Installation, Over-voltage Protection, Leaky Valve Protection

Installation & Operation



Visual guide for tool-free installation on manifold valves.



Simple press-and-release mechanism for easy dis-assembly.

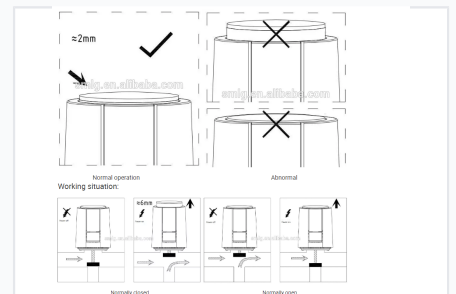


Diagram showing normal operation gaps and working states for NC and NO configurations.

Simple Integration

The actuator supports a 360-degree installation position and a tool-free snap-on mounting process. It features a visible indicator for normal operation (approx. 2mm gap) and provides a full displacement of approximately 6mm when powered on. The valve adapter concept ensures compatibility with various manifold types.

Compliance & Logistics

Certifications & Compliance

CE • EMC Directive 2014/30/EU • LVD Directive 2014/35/EU • RoHS Compliant

Logistics Information

Minimum Order Quantity	100 pcs
Monthly Supply Ability	200,000 Pieces
Standard Packaging	100 PCS per carton (46.8 x 32.5 x 28.5 cm), 13.88 kg