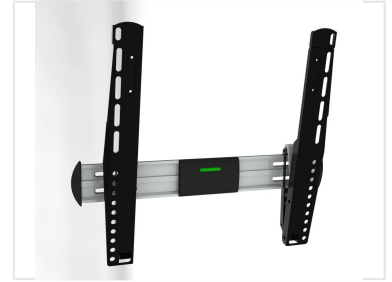


# 23-42 inch Tilting TV Wall Mount Bracket

## VESA 400x400

This TV wall mounting bracket is designed for 23 to 42 inch televisions. It supports a maximum VESA mounting pattern of 400x400mm and features a tilting mechanism.



### Overview

#### Professional Tilting TV Wall Mount

This ultra-slim tilting wall mount is engineered for screens ranging from 23 to 42 inches, offering a robust solution for professional installations. Constructed from high-gauge cold-rolled steel and aluminum, it supports loads up to 30 kg while maintaining a low profile of just 25mm from the wall. The tool-less tilt mechanism and integrated safety features ensure a secure and user-friendly experience for various commercial and residential environments.

### Key Performance Metrics

#### Key Performance Metrics

**30 kg**

Max Load Capacity

**400 x400mm**

Max VESA

**25 mm**

Wall Distance

### Technical Specifications

Screen Size Compatibility	23"-42"
Tilt Range	-15° / +0°
Material	High gauge cold rolled steel and aluminum

### Features

#### Product Features

- Tool-less tilt adjustment
- Ultra-slim low profile design
- Integrated safety lock
- Built-in bubble level for precise installation
- Adjustable arm length
- Universal hardware pack included

### Design & Finish

Available Finishes	Powder Coat Black, Powder Coat Silver
--------------------	---------------------------------------

## Logistics & Packaging

### Packaging Details

Metric	Value
Carton Quantity	5 pcs
Carton Dimensions	50 x 23.5 x 26.5 cm
Net Weight (NW)	6.4 kgs
Gross Weight (GW)	8.1 kgs
Packaging Type	Neutral gift box

### Container Loading Capacity

Container Size	Quantity (Pieces)	Quantity (Cartons)
20' GP	4505 pcs	901 ctns
40' GP	9025 pcs	1805 ctns