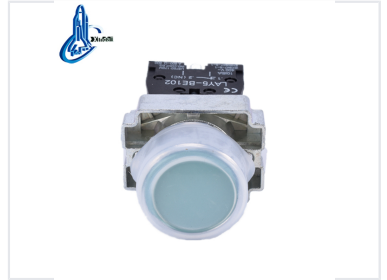


# 22mm Waterproof Metal Push Button Switch with Cap

This 22mm push button switch features a waterproof metal construction and a protective cap. It is designed for use in elevator control panels and other industrial applications.



## ADDITIONAL IMAGES



## Overview



**Specializing in production of buttons and indicators since 1997**

Durable metal construction with protective cap for harsh environment reliability.

### Industrial Grade Control

The 22mm waterproof metal push button switch is engineered for demanding industrial environments, featuring a robust zinc alloy and anti-flam plastic construction. Designed for control circuits up to 660V AC or 400V DC, it offers exceptional durability with high-grade silver alloy contacts for superior electrical erosion resistance. The inclusion of a protective cap ensures reliable performance in harsh conditions, making it an ideal choice for elevator control systems and heavy-duty machinery.

### Certifications

CE, ISO 9001, RoHS, UL

## Electrical Specifications

### Electrical Performance

**660 V**

Max AC Voltage

**400 V**

Max DC Voltage

**10 A**

Heating Current

### Insulation Resistance

50 M $\Omega$

### Contact Resistance

d25m $\Omega$

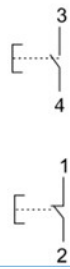
## Mechanical Specifications



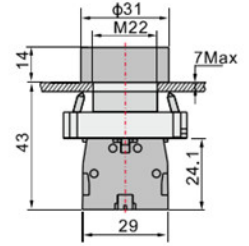
LAY5-BP31

Flush push button N/O  
Spring return  
Booted  
IP65

N/C



|          |           |
|----------|-----------|
| ○ White  | LAY5-BP11 |
| ● Black  | LAY5-BP21 |
| ● Green  | LAY5-BP31 |
| ● Yellow | LAY5-BP51 |
| ● Blue   | LAY5-BP61 |
| ● Red    | LAY5-BP42 |



Technical drawing illustrating mounting dimensions and available color variants.

### Mechanical Life

| Component Type  | Cycles  |
|-----------------|---------|
| Pushbutton      | 1000000 |
| Selector Switch | 500000  |

### Mounting Dimensions

- Mounting Hole Diameter: 22mm
- Button Diameter: 31mm
- Max Panel Thickness: 7mm
- Overall Height: 43mm

## Indicator Lamp Specs

### Lamp Performance

- Brightness: 60cd/m<sup>2</sup>
- Voltage Wave Tolerance: ±20%
- Continuous Working Life: 100,000 hours
- Withstand Voltage: AC 2.5KV/min

## Design & Compatibility

### Available Colors

White • Black • Green • Yellow • Blue • Red