

220V AC Cooling Fan 30x30x4mm

This compact AC fan operates on 220V and measures 30x30x4mm. It is designed to provide localized cooling for electronic components and other machinery.



ADDITIONAL IMAGES



Product Overview



Ultra-slim 4mm profile suitable for compact electronic enclosures.

Compact High-Performance Cooling Solution

This 220V AC cooling fan features a slim 30x30x4mm profile, making it an ideal choice for localized heat dissipation in space-constrained industrial equipment and compressors. Engineered with a die-cast aluminum housing and glass fiber reinforced plastic impellers, it offers a robust build quality designed for reliability. With options for high-precision ball bearings or quiet-running sleeve bearings, this fan provides versatile performance to maintain optimal operating temperatures in professional electronics.

Key Performance Metrics

Performance Highlights

220 V

Rated Voltage

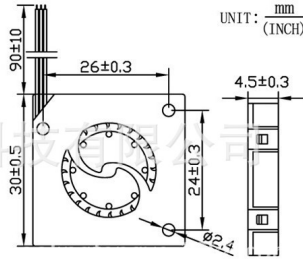
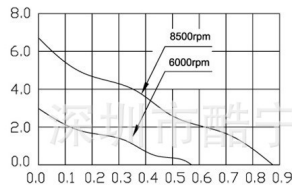
8500 RPM

Max Speed

500 M \odot

Insulation Impedance

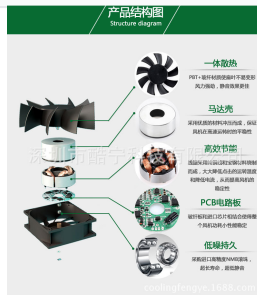
Technical Specifications



Detailed dimensional specifications and mounting hole patterns.

Physical Dimensions	30mm x 30mm x 4mm
Mounting Hole Distance	24 mm
Mounting Hole Diameter	2.4 mm

Material & Construction



Internal view showing pure copper coils, fiberglass PCB, and high-precision bearings.

Motor Features

- High-temperature copper line
- Pure copper wire coils
- Fiberglass PCB with integrated chips
- Sturdy motor housing for high-speed stability

Housing Material	Die-cast aluminum
Impeller Material	Glass fiber reinforced plastic (UL 94V-0 rating)

Electrical Safety



Various terminal configurations available to suit different PCB connection requirements.

Resist Strength	2200V/S
Connection Type	Leader Wire, Terminal Connector

Performance Data

Operating Parameters by Model

Model	Voltage (VDC)	Current (A)	Speed (RPM)	Air Flow (CFM)	Noise (DB-A)
BA3004L33S	3.3	0.05	6000	0.57	28
BA3004L05S	5	0.075	8500	0.87	36

Bearing System

两种选择
含油轴承和滚珠轴承

含油轴承 (SHL) 采用滚动摩擦的形式, 采用了两个滚珠轴承, 轴承中心轴孔与轴套内壁之间有微小间隙, 轴套与轴孔之间, 由于轴套的弹性, 轴套与轴孔之间的配合形式为过盈配合, 适合转速较高的风扇, 使用寿命较长。

滚珠轴承 (SHLS) 采用滚动摩擦的滚珠轴承, 在轴承中滚珠的滚动摩擦, 优点: 噪音低, 使用寿命长, 适合转速较高的风扇, 使用寿命较长。



Comparison between sleeve bearings for low noise and ball bearings for long life.

Sleeve vs. Ball Bearings

Available with two bearing types: Oil-impregnated sleeve bearings offer lower initial noise and cost-effectiveness for standard applications. Dual ball bearings utilize rolling friction with high-precision NMB components, providing a significantly longer lifespan and stability for high-speed, continuous operation.

Compliance & Quality

Certifications

CE • FCC • RoHS • UL 94V-0