

Performance Metrics

Mechanical Life

1000000 cycles

Pushbutton

500000 cycles

Selector Switch

Electrical Life

5000000 cycles

Pushbutton

250000 cycles

Selector Switch

Certifications & Standards

Standards & Certifications

CE, ISO 9001, RoHS, UL, IEC 60947-5-1, GB/T 14048.1

Dimensions & Mounting



LAY5-BD21

Standard handle

N/O



2 Position stay put

LAY5-BD21

2 Position spring return

LAY5-BD41

N/O + N/C

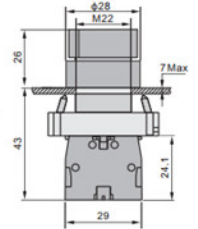


2 Position stay put

LAY5-BD25

2 Position spring return

LAY5-BD45



Dimensional diagram and configuration guide for standard handle switches, including mounting details.

Mounting Specifications

Parameter	Value
Panel Cutout	±0.2mm (M22 thread)
Height Above Panel	26mm
Max Panel Thickness	7mm
Total Height	43mm
Base Width	29mm