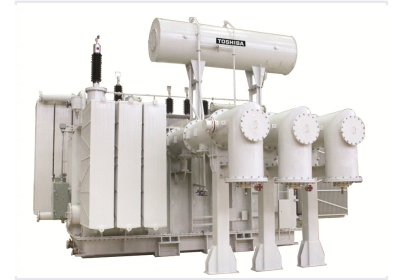


# 220kV Power Transformer

This power transformer is designed for applications up to 220kV. It is used in substations and power plants to step up or step down voltage levels for efficient power transmission and distribution.



## Product Overview

### High-Voltage Power Transformer

This industrial-grade power transformer is engineered for high-voltage applications up to 220kV. It serves as a critical component in substations and power plants, facilitating the efficient step-up or step-down of voltage levels for long-distance power transmission and distribution. Designed for reliability in demanding environments, the unit incorporates advanced cooling radiators and an expansion tank system for stable oil management.

## Technical Specifications

### Maximum Rated Voltage

**220 kV**

Voltage Rating

### Key Components

- High-voltage bushings
- Cooling radiators
- Oil expansion tank

### Primary Applications

Power Substations, Power Plants, Transmission Networks