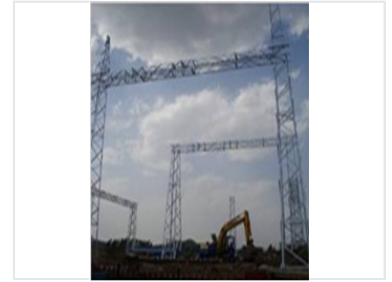


220kV Electrical Power Substation

This 220kV substation facilitates the transmission of electrical power. It features a lattice steel structure designed for high-voltage applications, ensuring reliable power distribution.



Overview

High-Voltage Power Distribution

This 220kV electrical power substation is designed for robust and reliable energy transmission. It features a sophisticated dual-bus wiring system for the 66kV section and a single-bus connection for the 220kV main wiring. The facility includes a two-story main control building, providing a functional footprint for essential operational equipment.

Technical Metrics

Core Capacity

90 MVA

Transformer Capacity

220 kV

Primary Voltage

66 kV

Secondary Voltage

Infrastructure

Control Building Specifications

Feature	Detail
Structure Type	Two-story frame structure
Building Area	610 square meters

Switchyard Materials

- 220kV Switchyard: All-steel framework of beams and columns
- 66kV Switchyard: Steel beams with reinforced concrete circular rod columns