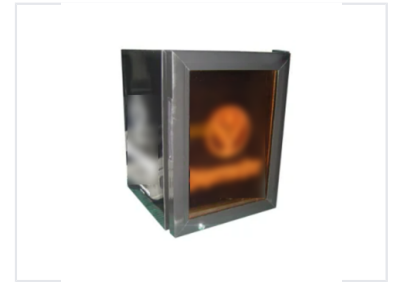


21L Compact Display Freezer

This display fridge is suitable for showcasing a variety of products, including beverages and food. It is customizable for decoration and door style.



Overview

Compact Display Solution

The 21L Compact Display Freezer is a space-efficient cooling unit designed for optimal product visibility. Featuring a sleek, framed glass door, it allows customers to easily view contents while maintaining a consistent temperature range of -18°C to -25°C. This unit is ideal for commercial settings with limited floor space, offering reliable performance through its dedicated compressor cooling system.

Technical Specifications

Refrigerant

R290

Model

SD21

Capacity

21 L

Cooling Method

Compressor

Performance

Temperature Range

-18 °C

Min Temp

-25 °C

Max Temp