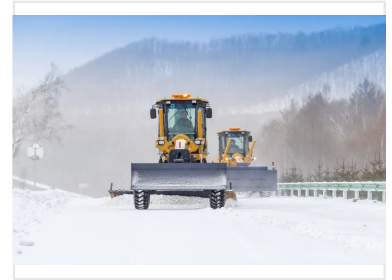


215 HP Motor Grader for Leveling and Ditching

This motor grader is used for large ground surface leveling, ditching, and slope scraping. It is necessary engineering machinery for road construction, water conservancy, and farmland improvement.



ADDITIONAL IMAGES



Overview



Heavy-duty 215 HP motor grader designed for road maintenance and leveling.

High-Performance 215 HP Motor Grader

This 215 HP motor grader is designed for professional ground surface leveling, ditching, slope scraping, and snow removal. It offers excellent performance for highway, airport, and farmland infrastructure projects. Built with a robust frame and advanced hydraulic system, this machine ensures precise blade control, reliable operation, and operator comfort in demanding environments.

Basic Parameters

| | |
|--------------------------------|-----------------------|
| Engine Model | 6CTA8.3-C215 |
| Rated Power | 160 kW |
| Rated Speed | 2200 rpm |
| Total Weight | 16500 kg |
| Overall Dimensions (L x W x H) | 8970 x 2625 x 3420 mm |
| Tire Specification | 17.5-25 |

Performance

Tractive Effort

87 kN

Tractive Effort

| | |
|----------------------|---------------------------|
| Forward Speeds | 5, 8, 11, 19, 23, 38 km/h |
| Reverse Speeds | 5, 11, 23 km/h |
| Maximum Gradeability | 20 % |

Features



Equipped with an ergonomic cabin and precise hydraulic controls for operator efficiency.

Key Advantages

Vibration Elimination, Sound Insulation, Dual-Circuit Hydraulic Brakes, Ergonomic Cab