

21-Meter Concrete Placing Boom with Three-Section Arm

This concrete placing boom features a three-section articulated arm, providing a reach of 21 meters. Its hydraulic system allows for smooth and controlled movements, enhancing productivity and minimizing material waste.



Overview



The PB21B-3R features a compact, mobile design suitable for diverse construction environments.

High-Efficiency 21-Meter Concrete Placing Boom

The PB21B-3R is a mobile hydraulic concrete placing machine designed for precision and efficiency in high-rise, bridge, and infrastructure projects. Featuring a three-section 'R' folding articulated arm with a 21-meter reach, it ensures consistent delivery while minimizing material waste. Its lightweight, balance-arm-free design allows for flexible 360° rotation and easy relocation on-site via tower crane.

Key Performance Metrics

Technical Highlights

21 m

Max Placing Radius

360 °

Slewing Range

7.5 kW

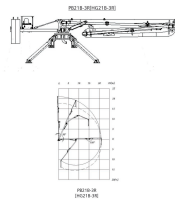
Motor Power

28 MPa

System Pressure

Boom Structure

构造及工作范围
STRUCTURE AND SCOPE OF WORK

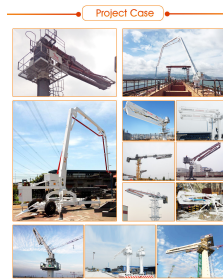


Detailed diagram illustrating the vertical and horizontal reach capabilities of the three-section arm.

Boom Section Details

Section	Length (m)	Articulation Range
1st Section	8.4	0° to 90°
2nd Section	6.9	0° to 180°
3rd Section	5.7	0° to 180°

Technical Specifications



Real-world application showing the boom's stability and reach on a job site.

Physical & Operational Data

- Free Standing Height: 3m
- Total Weight: 9150 kg
- Max Lifting Unit: 5850 kg
- Delivery Pipeline Diameter: 1133x 4.5 mm
- Delivery Hose Diameter: 5" x 3000 mm
- Operating Temperature: -20°C to 55°C
- Power Supply: 380V/50Hz (Customizable)
- Slewing Mode: Gear Slewing

Control & Features



Robust hydraulic system and multi-section boom arm for precise concrete distribution.

Operational Features

Radio Remote Control, Cable Remote Control, Fully Hydraulic Drive, Inclined Outrigger Structure, No Balance Arm Design, Integrated Pump Station

Optional Configurations

Customizable Options

- Custom Column Lengths: 4M, 5M, 6M, 10M
- Climbing Modes: Floor climbing or Shaft climbing
- Remote Brands: HBC or AUTEC
- Control Components: Omron/Schneider electrical components
- Valves: Electric proportional control or Slewing cushion valves
- Connectors: Push-in connectors and imported hydraulic hoses

Compliance

Quality Standards

ISO 9001:2015 • CE Certified • ISO 14001 • OHSMS 18000