

21-Meter Concrete Placing Boom with 3-Section Arm

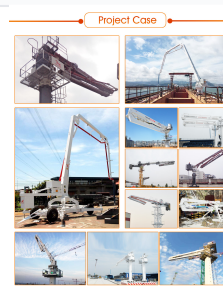
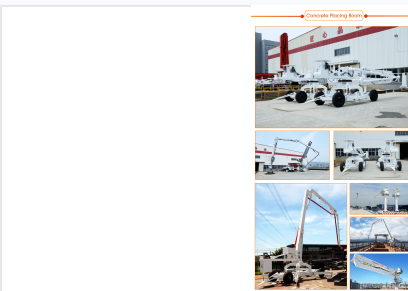
This concrete placing boom has a 21-meter reach and a three-section articulating arm. It is designed for precise concrete placement in large construction projects.



ADDITIONAL IMAGES



Overview



High-Efficiency Concrete Placement

This 21-meter concrete placing boom is engineered for precision and versatility in high-rise buildings, bridges, and infrastructure projects. Featuring a three-section 'R' folding arm and full hydraulic drive, it offers a wide working range and flexible maneuverability in confined spaces. Its modular design allows for rapid assembly and disassembly, while the lightweight construction is optimized for floor loading and ease of transport.

Key Performance Metrics

Key Performance Metrics

21 m

Max Placing Radius

4.2 m

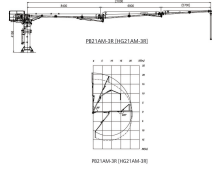
Free-standing Height

360 °

Slewing Range

Boom Structure

构造及工作范围 STRUCTURE AND SCOPE OF WORK



Boom Section Specifications

Section	Length (m)	Articulation Angle
1st Section	8.4	0°~90°
2nd Section	6.9	0°~180°
3rd Section	5.7	0°~220°

System & Power

主要特点 MAIN FEATURES

- R型三臂结构, 液压驱动, 折叠展开灵活, 布料范围广。
Three arms design "R" folding. The machine is fully driven by hydraulic and can slew flexibly, with wide working range.
- 模块化设计理念和快速安装理念, 通过销轴快速连接各个模块, 实现设备快速拆装。
The machine adopts modular design which can be linked quickly by pin shafts, easy to install disassemble and transport.
- 配备无线遥控和有线遥控两种操作模式, 操作轻松方便。
Two modes of operation: radio remote control and cable remote control, easy to operate.
- 设备随爬升梯架一起快速爬升, 高效施工。
The machine climbs by climbing frame to reduce the workload of climbing, and increase the efficiency.
- 液压电气元件采用国内外知名品牌, 设备质量稳定可靠。
The main electronic components are products of the world-famous brand, with high-quality.

Power Supply	380V / 50Hz (Customizable)
Motor Power	7.5 kW
System Hydraulic Pressure	28 MPa
Control Modes	Radio Remote Control, Cable Remote Control, Electric Proportional Control

Installation & Logistics

主要特点 MAIN FEATURES

- 模块化设计理念和快速安装理念, 通过销轴快速连接各个模块, 实现设备快速拆装。
The machine adopts modular design which can be linked quickly by pin shafts, easy to install disassemble and transport.
- 配备无线遥控和有线遥控两种操作模式, 操作轻松方便。
Two modes of operation: radio remote control and cable remote control, easy to operate.
- 设备随爬升梯架一起快速爬升, 高效施工。
The machine climbs by climbing frame to reduce the workload of climbing, and increase the efficiency.
- 液压电气元件采用国内外知名品牌, 设备质量稳定可靠。
The main electronic components are products of the world-famous brand, with high-quality.

可选配置 OPTIONAL

- 无线遥控 (Radio Remote Control)
- 有线遥控 (Cable Remote Control)
- 电液比例控制 (Electric Proportional Control)
- 爬升梯架 (Climbing Frame)



Climbing Modes

- Floor climbing
- Elevator shaft climbing
- Formwork climbing

Total Weight	6400 kg
Maximum Lifting Unit Weight	5200 kg

Technical Specifications

Delivery Pipeline Diameter	1133 x 4.5mm
Delivery Hose Dimensions	5" x 3000 mm
Ambient Operating Temperature	-20°C to 55°C

Compliance

Certifications & Standards

CE Certified • ISO 9001:2015 • EN 60204-1:2006 • 2014/35/EU (LVD)