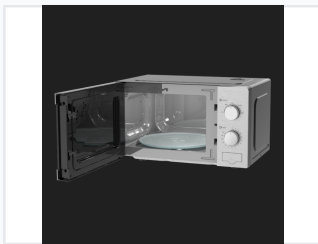


20L Mechanical Microwave Oven

This 20L microwave oven features mechanical controls for power and timer settings. With 1120W input power and 700W output power, it efficiently heats and cooks food.



ADDITIONAL IMAGES



Overview

Compact and Reliable Heating Solution

This 20L mechanical microwave oven is designed for efficient, everyday use in professional or commercial settings. Featuring a robust 700W output and five distinct power levels, it offers precise control for everything from rapid heating to delicate defrosting. Its durable construction includes waterproof housing and a specialized bottom plate design, ensuring longevity and ease of maintenance.

Performance

Output Power

700 W

Output Power

Power Levels 5 levels

Max Cooking Timer 35 min

Physical Specifications

Capacity 20 L

Turntable Diameter 255 mm

Features

Key Features Defrost Setting, Cooking End Signal, Waterproof Housing, Mechanical Control

Quality & Safety

Safety Metrics

| Metric | Value |
|-------------------|-----------|
| Microwave Leakage | Super Low |
| Cavity Seeper | < 15g |