

200cc Cafe Racer Motorcycle

This 200cc cafe racer motorcycle features a liquid-cooled, single-cylinder engine for smooth performance. Its design blends classic aesthetics with modern features like LED lighting and digital instrumentation.



ADDITIONAL IMAGES

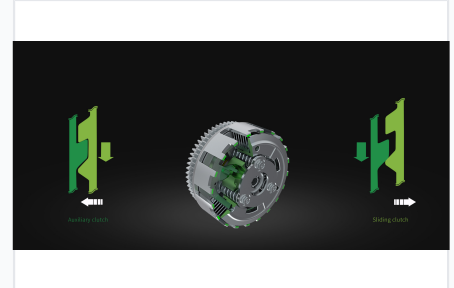
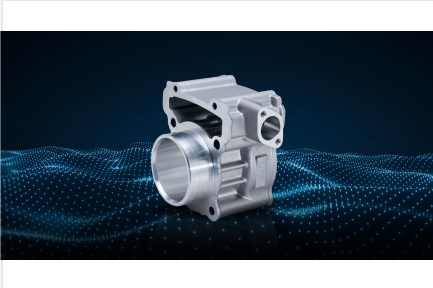


Overview

ZONTES ZT200-GK Cafe Racer

This 200cc cafe racer is engineered for a blend of urban agility and classic-inspired aesthetic. It features a high-performance, water-cooled engine paired with a Bosch fuel injection system for reliable power delivery. Designed with rider comfort and safety in mind, it includes a robust steel pipe frame, dual-channel ABS, and modern LED lighting.

Engine & Performance



Engine Metrics

16.1 kW

Maximum Power

19 N.m

Maximum Torsion

12.5 :1

Compression Ratio

Engine Configuration

Single cylinder, SOHC, Water cooled

Displacement

198 cc

Dimensions & Capacity

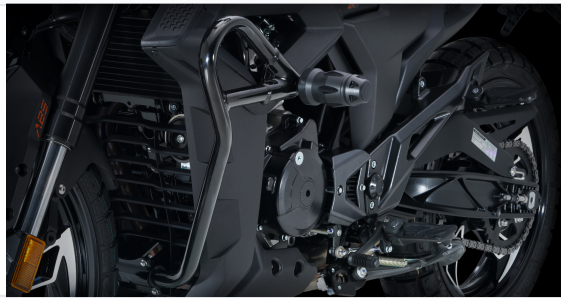
Vehicle Dimensions

Attribute	Value (mm)
Length	1970
Width	870
Height	1105
Wheelbase	1360
Seat Height	770

Weight Specs

- 140
- 152

Chassis & Handling



Tire Specifications

- Front: 110/70-17
- Rear: 130/70-17

Braking System

Dual channel ABS, Front Disc Brake, Rear Disc Brake

Technical Features



Lighting

LED Headlamp • LED Tail light • LED Steering lamp

Fuel System

Bosch Intelligent Electrical Fuel Injection