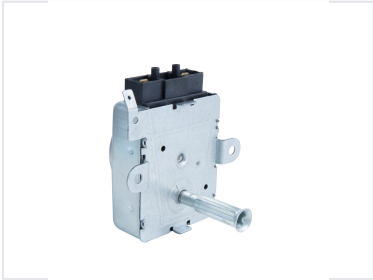


2 RPM Synchronous Motor for Home Appliances

This synchronous motor is commonly used in household appliances such as ovens and hair dryers. It operates on 220-240V AC at 50/60Hz, with a power consumption of 6W and a rotational speed of 2 RPM.



ADDITIONAL IMAGES



Product Overview

High-Performance Synchronous Motor

This 2 RPM synchronous motor is designed for reliable performance in a wide range of household appliances, including electric ovens, microwaves, blenders, and humidifying equipment. Engineered for durability, it features a robust metal housing and is rated for operating temperatures up to 125°C. With its standard voltage and power specifications, this motor is an ideal component for both new appliance manufacturing and maintenance repair applications.

Technical Specifications

Rotational Speed

2 RPM

Rotational Speed

Electrical Ratings

Parameter	Value
Voltage	220-240V AC
Frequency	50/60Hz
Power Consumption	6W
Current	0.03A

Thermal Class

T125°C (Class H)

Applications

Suitable Appliances

Electric Oven, Microwave Oven, Blender, Humidifier, Electric Fan, Chocolate Melting Machine, Air Purifier

Mechanical Details

Cross Flow Fan Compatibility

- Max length: 480mm
- Diameter: 60mm
- Diameter: 48mm
- Diameter: 40mm
- Diameter: 30mm

Build Features

Metal Housing • Mounting Brackets • Terminal Block