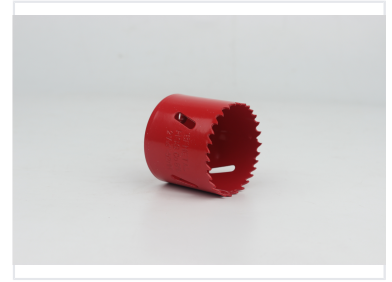
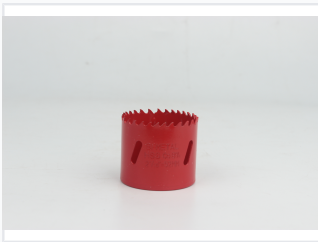


2 1/8-Inch Bi-Metal Hole Saw

This bi-metal hole saw is designed for cutting precise and clean holes in various materials. Constructed with high-speed steel teeth electron-beam welded to a tough alloy body, it features slots for easy plug removal.



ADDITIONAL IMAGES



Overview

High-Performance Bi-Metal Hole Saw

This professional-grade bi-metal hole saw is engineered for heavy-duty cutting through challenging materials including stainless steel, nail-embedded wood, and plastics. Featuring high-speed steel teeth electron-beam welded to a tough alloy steel body, it offers exceptional durability and heat resistance. The design includes specialized side slots for efficient chip clearing and easy plug removal, making it an ideal choice for both portable power tools and industrial machining equipment.

Key Performance Metrics

Key Specifications

52 mm

Diameter

8 %

Cobalt Content

38 mm

Standard Depth

Material & Construction

Material Composition

- M42 HSS Bi-Metal edge (8% Cobalt)
- Alloy steel back for heavy-duty support
- Electron-beam welded construction

Cutting Specifications

Tooth Design

4/6 TPI Variable • 4/6 Sharp Aggressive • 6 TPI Constant

Available Cutting Depths

32mm, 35mm, 38mm, 44mm, 47mm

Applications

Compatible Materials

- Stainless Steel
- Nail-embedded wood
- Hardwood floors
- Plywood
- Plastics
- Metal pipes

Compatible Equipment

Portable Electric Drills, Pneumatic Tools, Vertical Drill Machines, Lathes, Boring/Milling Machines

Technical Dimensions

Production Range

Measurement	Minimum	Maximum
Diameter (Metric)	14mm	250mm
Diameter (Imperial)	9/16"	9-27/32"