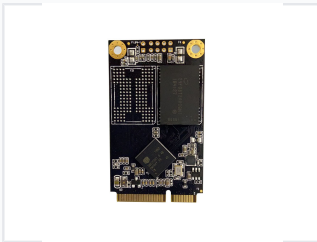


1TB mSATA Solid State Drive

This 1TB mSATA solid-state drive (SSD) is designed for embedded systems and high-speed data storage. It features a Silicon Motion SM2258XT controller and supports SATA III interface for fast data transfer rates.



ADDITIONAL IMAGES



Overview

High-Performance mSATA Storage Solution

This 1TB mSATA Solid State Drive is engineered for high-speed data storage in compact environments such as laptops, tablets, and embedded systems. Utilizing advanced 3D NAND flash memory and a reliable Silicon Motion controller, it delivers enhanced power efficiency and robust data integrity. It is an ideal choice for professional applications requiring fast boot times and quick access to large datasets.

Performance Highlights

Key Performance Metrics

1 TB

Storage Capacity

6 Gbps

Interface Speed

Technical Specifications

Form Factor	mSATA
Interface	SATA III
Controller	Silicon Motion SM2259XT / SM2258XT
Flash Memory	3D NAND
Compatible Devices	Laptops, Tablets, Embedded Systems, Industrial PCs, Desktop PCs
PCB Version	V1.1

Features

Advanced Features

- Advanced flash management for longevity
- Enhanced power efficiency
- Robust data integrity protection
- High-speed data transfer rates
- Compact design for space-constrained environments