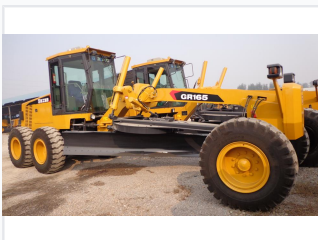


# 170 HP Motor Grader for Road Construction

This 170 HP motor grader is used for ground leveling and slope scraping. It can also perform bulldozing, scarification, and snow removal tasks on highways, airports, and farmlands.



## ADDITIONAL IMAGES

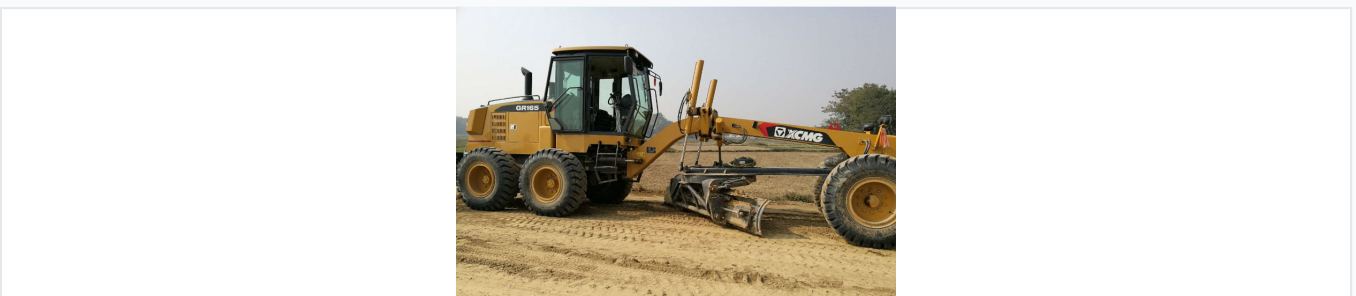


## Overview

### Professional Grade 170HP Motor Grader

This 170HP motor grader is a versatile construction machine engineered for high-performance ground leveling, ditching, slope scraping, and snow removal. It features a turbocharged diesel engine optimized for high torque, low fuel consumption, and sustained power output. Designed for demanding environments like highway construction, urban infrastructure, and large-scale land improvements, this unit provides the reliability required for intensive B2B construction projects.

## Performance



Articulated frame design for enhanced maneuverability.

### Rated Power

<b>170 HP</b> Engine Power	<b>130 kW</b> Rated Power
-------------------------------	------------------------------

### Tractive Effort

77 kN

## Technical Specs



Heavy-duty frame and hydraulic system configuration.

Engine Model	6BTA5.9-C180-II
Standard Operating Weight	15000 kg
Overall Dimensions	8900 x 2625 x 3470 mm
Tire Specification	17.5-25

## Key Features



Ergonomic operator cabin designed for long-shift efficiency.

### Equipment Highlights

- Turbocharged diesel engine with high power reserve
- Efficient torque converter for joint operation
- NO-SPIN self-locking rear differential
- Dual-circuit hydraulic brake system
- Sealed climate-controlled cabin

## Applications

Primary Applications	Highway Construction, Airport Development, Land Improvement, Water Conservancy, Urban Road Maintenance, Mine Construction
----------------------	---------------------------------------------------------------------------------------------------------------------------