

16 Ton LNG Forklift Truck with Tire Clamp

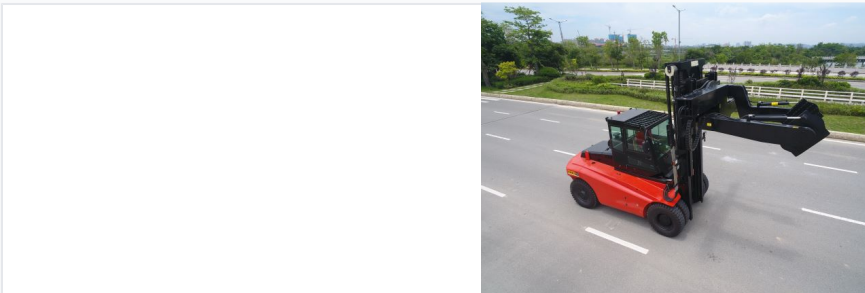
This 16 ton LNG forklift truck is equipped with a tire clamp attachment for efficient and safe handling of large tires. Powered by LNG, it offers reduced emissions compared to traditional diesel models.



ADDITIONAL IMAGES



Overview



Heavy-Duty LNG Material Handling Solution

This 16-ton heavy-duty forklift is specifically engineered for demanding industrial environments, featuring a specialized tire clamp attachment for the secure handling of large-scale tires. Powered by Liquefied Natural Gas (LNG), it offers a cleaner and more cost-effective alternative to traditional diesel engines without sacrificing performance. The vehicle is built on a robust box-type frame validated through 3D finite element analysis to ensure maximum stability and reliability during high-capacity operations.

Key Performance Metrics



Performance Highlights

16 t

Rated Load

3500 mm

Lifting Height

25000 kg

Service Weight

150 kN

Traction

Engine & Powertrain



Fuel Type

LNG (Liquefied Natural Gas) • Low Emissions

Engine Configurations

Option	Displacement	Power Output	Rated Speed
Standard High-Efficiency Engine	6.494L	129KW	2200
Premium Turbocharged Engine	6.7L	142KW	2200

Number of Cylinders

6

Chassis & Mobility

Tyre Specifications

- Front: 12.00-24-18PR
- Rear: 12.00-20-18PR
- Configuration: 4 Front / 2 Rear

Min. Turning Radius

5800 mm

Travel Speed (Load/Unload)

26 / 30 km/h

Technical Systems

Braking System

Hydraulic clamp disc brakes with superior thermostability

Steering System

Full-hydraulic transverse oil cylinder type

Control System

Pilot valve control for reduced labor intensity

Operational Dimensions

Physical Dimensions

Parameter	Value
Overall Length (with forks)	7640 mm
Overall Width	2750 mm
Mast Height (lowered)	3625 mm
Wheelbase	3800 mm
Fork Dimensions	1800 x 220 x 100 mm

Operator Comfort



Cabin Equipment

Air Conditioning, Heater, Rear View Display, Full Enclosed Cab

Attachments



Tire Clamp Performance

- Working Pressure: 16 Mpa
- Oil Flow Requirement: 60 l/min
- Hydraulic fork positioner included