

# 16-Ton Diesel Forklift Truck

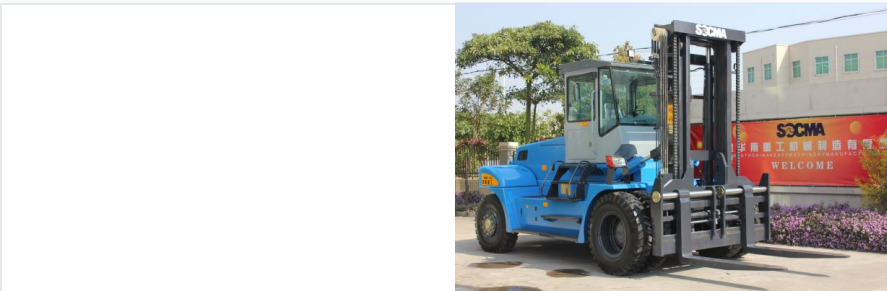
This 16-ton diesel forklift truck is built for heavy lifting operations in industrial settings. It features a durable diesel engine that delivers reliable performance and high torque for efficient material handling.



## ADDITIONAL IMAGES



## Product Overview



### Heavy-Duty 16-Ton Diesel Forklift

This 16-ton diesel forklift is engineered for demanding industrial applications, featuring a high-quality turbocharged engine that balances strong power performance with energy conservation. The vehicle is built on a robust, 3D finite element analyzed box-type frame to ensure maximum longitudinal and transverse stability during heavy-duty cycles. Designed with operator efficiency in mind, it includes a full-hydraulic steering system, pilot valve controls, and a pressurized cab equipped with air conditioning and heating for all-weather operation.

## Core Performance



### Key Performance Indicators

**16 t**

Rated Load

**900 mm**

Load Center

**3500 mm**

Standard Lift Height

**5800 mm**

Min. Turning Radius

## Engine & Powertrain

### Engine Specifications

Feature	Specification
Engine Type	Turbocharged, 6-Cylinder
Rated Power	129KW / 142KW @ 2200rpm
Displacement	6.494L / 6.7L
Transmission	Imported technology, smooth torque converter
Gears	2 Front / 1 Rear

## Operational Capabilities



### Speed & Gradeability

Metric	With Load	Without Load
Travel Speed	26 km/h	30 km/h
Lifting Speed	250 mm/s	260 mm/s
Lowering Speed	430 mm/s	330 mm/s
Gradeability	20%	21%

## Chassis & Build



### Chassis & Build

- Firm box-type frame with 3D finite element analysis
- Transverse oil cylinder type steering bridge
- Full-hydraulic steering for flexible operation
- Independent transmission and hydraulic oil cooling systems
- Hydraulic clamp disc brakes for stable thermostability
- Nondestructive testing on main welding parts

## Dimensions

### Physical Dimensions

Dimension Type	Value
Overall Length (with forks)	7640 mm
Overall Width	2750 mm
Height to Cab	3365 mm
Wheelbase	3800 mm
Fork Dimensions	1800 x 220 x 100 mm
Min. Ground Clearance (Mast)	265 mm

## Operator Comfort

Cabin & Control	Full Enclosed Cab, Air Conditioning, Heater, Rear View Display, Pilot Valve Control, Hydraulic Fork Positioner
-----------------	--

## Tires

Tire Configuration	Front: 12.00-24-18PR (4 wheels) / Rear: 12.00-20-18PR (2 wheels)
--------------------	--

## Compliance

### Standards & Compliance

ISO 9001:2015 • CE Certified • Special Equipment License