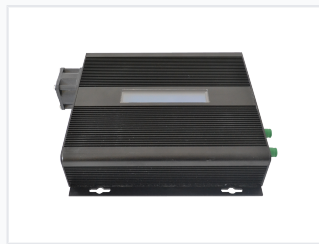


1550nm EDFA Erbium-Doped Fiber Amplifier for CATV

This erbium-doped fiber amplifier (EDFA) is designed for cable TV (CATV) signal transmission with 1550nm external modulated optical transmitter compatibility. It provides low noise figure in high-gain, high power output circumstances, and supports over 100km transmission.



ADDITIONAL IMAGES



Overview

High-Performance 1550nm EDFA

This Erbium-Doped Fiber Amplifier (EDFA) is precision-engineered for 1550nm wavelength operation, specifically optimized for CATV network signal amplification. Featuring HTTP multiplexed outputs, it ensures efficient and high-quality signal distribution across your infrastructure. The unit is designed for OEM integration, offering reliable performance for demanding audio-video product systems.

Technical Specifications

Operating Wavelength	1550nm
Primary Application	CATV, Optical Signal Amplification, Audio-Video Systems

Connectivity & Power

Available Ports

- Optical Input (IN)
- Optical Output (OUT)
- RJ45 Network Port
- 5V Power Input

Power Input	5 V
Network Connectivity	RJ45

Features

Key Features

HTTP Multiplexed Outputs • OEM Customizable • High-Quality Signal Distribution