

1500V Photovoltaic Combiner Box

The combiner box merges multiple source circuits of a photovoltaic array into a single DC output. Each power circuit is individually protected by a touch-safe fuse holder.

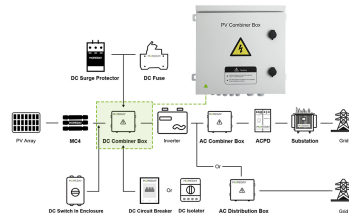


ADDITIONAL IMAGES



Product Overview

SYSTEM DIAGRAM SHOWS



System diagram showing the integration of the DC combiner box between the PV array and the inverter.

High-Voltage Photovoltaic Protection

This 1500V DC combiner box is engineered to consolidate multiple solar array source circuits into a single output, streamlining the connection to the inverter. It features advanced protection mechanisms including lightning-proof surge protection and individual circuit fusing to ensure fail-safe operation. Designed for durability in diverse environments, it is ideal for residential installations, solar farms, and solar pumping systems.

Technical Specifications



The IP65 rated metal enclosure provides superior moisture and lightning protection for outdoor use.

Ingress Protection

IP65 Waterproof

Maximum System Voltage

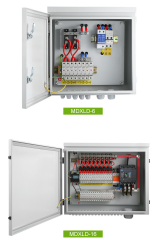
1500 V

Integrated Protection

Reverse Connection Protection, Anti-backflow Protection, Overcurrent Protection, Lightning Protection, Overvoltage Protection

Construction & Design

IN-BOX CONFIGURATION



Detailed view of the internal wiring and component layout for multiple input strings.

Internal Components

- Touch-safe fuse holders
- DC Surge Protector
- DC Circuit Breaker / Isolator
- DC Switch

Enclosure Material

Cold rolled steel plate (Metal)

Applications

Recommended Applications

- Residential Solar Systems
- Commercial Solar Farms
- Solar Pumping Systems

Installation

Professional Setup

Installation must be performed by a professional electrical engineer. Ensure the installation environment is free from flammable and explosive materials to maintain system safety.