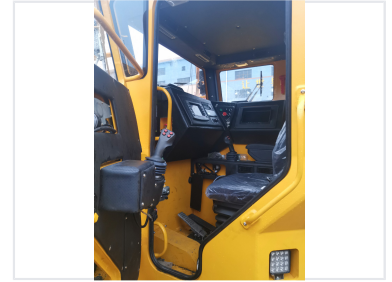


# 14-Metric Ton Underground Wheel Loader

This underground wheel loader has a 14-metric ton capacity. It is designed for heavy-duty performance in confined spaces.



## ADDITIONAL IMAGES



## Overview

### High-Capacity Underground Performance

The WJ-6 underground wheel loader is a heavy-duty machine engineered for efficient material handling in mining tunnels measuring at least 3.5m by 3.5m. With a 14-metric ton loading capacity and a powerful 256 kW diesel engine, it delivers high performance in confined underground environments. The unit integrates premium international components to ensure reliability, ease of maintenance, and high operational uptime for demanding mining applications.

## Key Performance Metrics

### Performance Highlights

**14 Metric Ton**

Loading Capacity

**6 m<sup>3</sup>**

Bucket Volume

**350 kN**

Max Shovel Force

## Technical Specifications

### Machine Dimensions

Dimension	Measurement
Length	10600
Width	2866
Height	2500

Engine Power	256 kW
--------------	--------

## Certifications

Certifications & Standards	CE, QS9001, CA
----------------------------	----------------

## Options

### Available Upgrades

- Sealed cabin with heater and AC
- Automatic central lubrication
- Automatic & Manual fire suppression
- Radio & Video system
- Travel Aid system
- Remote control system