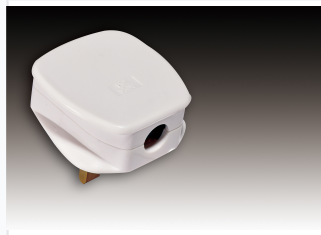


13A UK Mains Plug

This 13A plug is designed for use in the United Kingdom and other countries that use the BS 1363 standard. It is suitable for a variety of electrical appliances and devices, ensuring a safe and reliable connection to mains power.



ADDITIONAL IMAGES



Product Overview

Professional Grade UK Mains Plug

This 13A UK mains plug is engineered for safety and reliability, featuring high-quality, long-lasting materials suitable for professional applications. Designed to comply with BS 1363 standards, it includes essential safety features like solid brass pins, a secure cord grip, and a dedicated cord cover. The user-friendly design incorporates a large connection hole for easy wiring and precise pin bolts to ensure all screws fix securely into the conductors.

Technical Specifications

Rated Current

13 A

Rated Current

250 V

Rated Voltage

Construction Features

- Solid brass pins
- Durable plastic casing
- Integrated cord grip
- Cord cover included
- Precise pin bolt system

Compliance Standards

BS 1363, UK Standard

Design & Usability

Design Advantages

- Large connection hole for easy wiring
- Secure screw positioning
- Type G compatible
- Optional red indicator light version