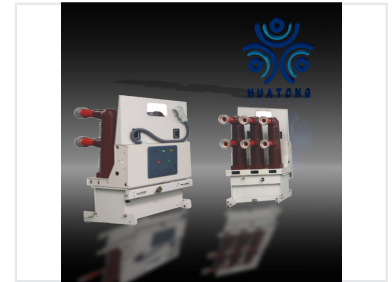
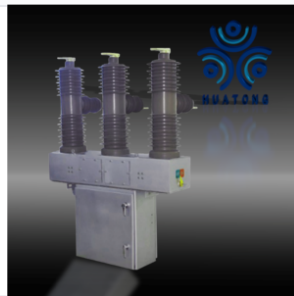


# 12kV Indoor Vacuum Circuit Breaker

This vacuum circuit breaker is designed for 12kV power distribution systems, offering control and protection. It uses vacuum as an arc extinguishing medium, with the fixed and moving contact enclosed in a permanently sealed vacuum interrupter.



## Product Overview



Engineered for reliable circuit interruption in substations and industrial networks.

## Professional Medium Voltage Protection

The VD4 Indoor Vacuum Circuit Breaker is engineered for reliable power distribution control and circuit protection. Designed for 12kV systems, it utilizes advanced vacuum interrupter technology for efficient arc quenching and superior dielectric strength. This robust device ensures optimal safety and stability for industrial power networks.

## Technical Specifications



Three-phase configuration for medium voltage power distribution systems.

### Available Rated Currents

- 630
- 1250
- 1600

**Rated Voltage**

12 kV

**Installation**

Indoor

## Key Features

### Technology Highlights

Vacuum Interruption, High Dielectric Strength, Fast Recovery, Overcurrent Protection, Short-circuit Protection