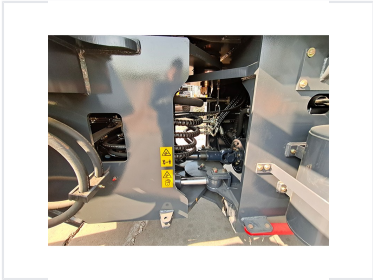


## 1.2 Ton Compact Wheel Loader

This 1.2 ton wheel loader is designed for various applications, offering efficient performance in tight spaces. It is ideal for construction, landscaping, and agricultural tasks with its powerful engine and operator-friendly controls.



### ADDITIONAL IMAGES



### Overview

#### Versatile 1.2 Ton Compact Wheel Loader

This 1.2-ton compact wheel loader is engineered for high productivity in both confined spaces and open areas. It features a robust frame design capable of handling significant vertical and horizontal loads, ensuring reliability in challenging work environments. Equipped with an ergonomic pilot joystick and a panoramic cabin, it offers operators exceptional control and visibility, while the integrated quick hitch system allows for rapid attachment changes to maximize efficiency.

### Performance & Engine

Rated Capacity	1.2 ton
Available Engine Brands	Perkins, Yanmar, Kohler, Xinchai

### Operator Experience

#### Cabin Comfort & Safety

- Vibration-absorbing seat to reduce fatigue
- Panoramic floor-to-ceiling tinted glass
- Large resistance steps for easy access
- Rear-view camera with color screen

Control System	Ergonomic pilot joystick for steering and loader control
----------------	--

### Operational Efficiency

#### Key Efficiency Metrics

**1 seconds**

Quick Attachment Changes

Quick Hitch System	Yes
--------------------	-----