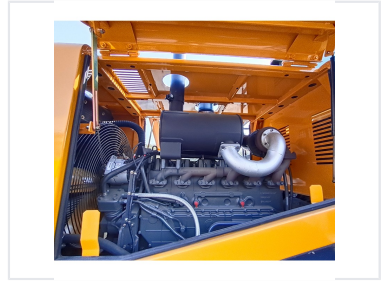


1.2 Ton Compact Wheel Loader

This compact 1.2 ton wheel loader is designed for various applications, including construction, agriculture, landscaping, and material handling. It features a robust hydraulic system for efficient lifting and loading operations.



ADDITIONAL IMAGES



Overview

Compact Performance

This 1.2-ton compact wheel loader is engineered for versatility in construction, agriculture, and material handling. Featuring a robust articulated design, it excels in confined spaces while maintaining high productivity levels. The machine incorporates an ergonomic cabin with panoramic views and pilot joystick controls to ensure operator comfort and precision during long shifts.

Performance Metrics

Rated Load Capacity

1.2 ton

Load Capacity

Bucket Capacity

0.6 m³

Max Dumping Height

2.5 m

Key Features

Operational Highlights

- Quick hitch system for rapid attachment changes
- Pilot joystick steering and loader control
- Rear-view camera with large display
- Vibration-absorbing operator seat

Design Advantages

Compact Turning Radius, Articulated Design, Panoramic Visibility, Easy Cab Access

Technical Specifications

Engine Configuration	Multi-cylinder diesel engine
Frame Design	Heavy-duty articulated frame designed for high vertical and horizontal loads