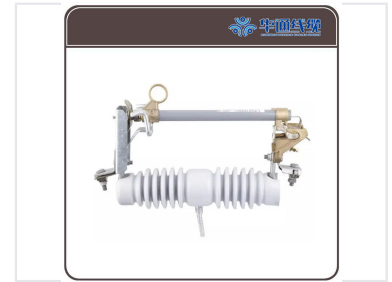


11kV High Power Dropout Fuse

This 11kV dropout fuse offers reliable protection for distribution transformers and lines. It is designed to protect against short circuits and overloads.



ADDITIONAL IMAGES



Overview



Standard 11kV dropout fuse unit featuring robust porcelain insulation and secure mounting hardware.

High-Performance 11kV Dropout Fuse Cutout

This 11kV dropout fuse cutout is engineered for the primary protection of distribution transformers and overhead lines against short circuits and overloads. It features a reliable dropout mechanism that provides clear visual indication of a blown fuse, simplifying maintenance and fault identification. Constructed with high-quality porcelain or polymeric insulators, it ensures long-lasting performance in demanding outdoor environments.

Technical Performance

Rated Voltage

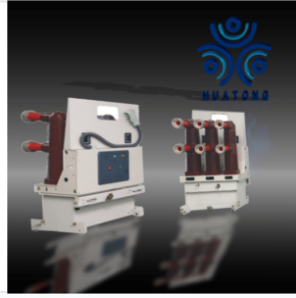
11 kV

Rated Voltage

Primary Functions

- Short circuit protection
- Overload protection
- Switching current management

Construction Materials



Detailed view of the fuse tube assembly designed for reliable arc quenching and fault interruption.

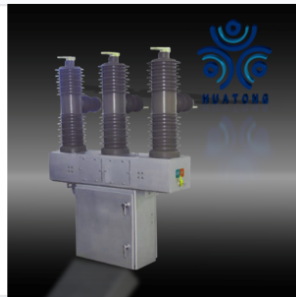
Fuse Tube Construction

Component	Material
Interior	Extinguishing tube
Exterior	Phenolic compound paper or Epoxy glass

Insulator Material

Porcelain, Polymeric Material

Design Features



High-voltage dropout fuse designed for reliable isolation in electrical networks.

Mechanical Features

- Static contacts fixed on insulator supports
- Moving contacts installed on fuse tube ends
- Hinged fuse holder for easy replacement
- Galvanized steel mounting brackets
- Corrosion-resistant metal hardware

Installation & Application



Three-phase configuration suitable for protecting distribution transformers and lines.

Application Environment

Outdoor • Overhead Distribution • Substation • Industrial

Installation Context

Connected with incoming feeders of distribution transformers or distribution lines.

Fault Indication

Yes