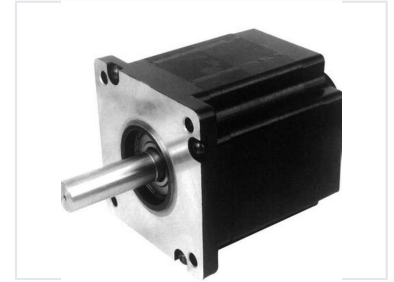


# 110mm Brushless DC Gear Motor

This 110mm series brushless DC gear motor features high power density and a compact design. It is suitable for applications requiring precise speed control, high efficiency, and extended operational lifespan.



## ADDITIONAL IMAGES



## Overview

### High-Performance 110mm Brushless DC Motor

This 110mm series brushless DC motor offers high power density and efficiency, making it an ideal replacement for traditional AC or brushed motors in energy-saving applications. Featuring a permanent magnet construction and waterproof protection, it provides reliable performance with low noise and no spark interference. Its versatile design supports integration with various reducers and electronic control technologies for precise motion control.

## Performance Highlights

### Key Performance Metrics

**310 VDC**

Rated Voltage

**8000 RPM**

Max Speed

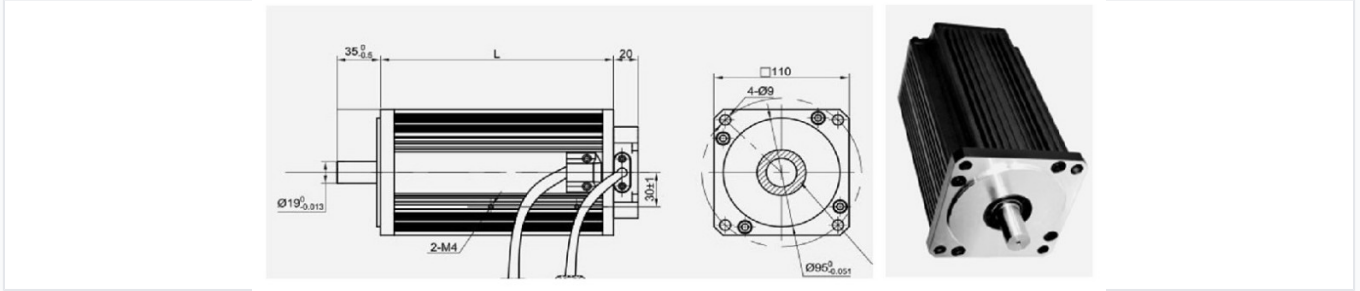
**7.16 N·m**

Max Torque

**2249 W**

Max Power

## Technical Specifications



Dimensional diagram showing the 110mm square flange, 19mm shaft diameter, and mounting hole configurations.

<b>Motor Type</b>	Gear Motor
<b>Construction</b>	Permanent Magnet
<b>Commutation</b>	Brushless
<b>Number of Poles</b>	8
<b>Protection Features</b>	Waterproof, Overvoltage Protection, Undervoltage Protection, Overcurrent Protection, Overheating Protection

## Operational Standards

**Insulation Class**  
Class B • Class F

**Protection Class**  
IP40 • IP65

**Work Duty**

- S1 (Continuous)
- S2
- S3

## Model Variants

**Model Comparison Table**

Model Number	Power (W)	Speed (RPM)	Torque (N·m)	Length (mm)	Weight (kg)
110-BLB0J062204RN-01	625	2000	2	125	4.8
110-BLB0J125404RN-01	1250	4000	4	155	5.2
110-BLB1J188804RN-01	1885	8000	6	185	5.5
110-BLB2J225304RN-01	2249	3000	7.16	210	6

## Applications

**Common Applications**

CNC Machine Tools, Industrial Control, Electric Bicycle, Medical Field, Home Appliances, Boat & Car, Fans

## Certifications

**Compliance & Certifications**

CCC, CE