

10.24 KWH LiFePO4 Battery Pack

This LiFePO4 battery pack has a rated capacity of 10.24KWH at 25.6V/51.2Vdc. It features an intelligent BMS with automatic calibration and active balancing technology.



ADDITIONAL IMAGES



Overview

High-Capacity Energy Storage Solution

This 10.24 KWH LiFePO4 battery pack is a robust energy storage solution designed for high-demand B2B applications, including home energy storage, communication stations, and industrial backup. Available in 25.6V/400Ah and 51.2V/200Ah configurations, it features 32 internal 100Ah cells managed by an intelligent BMS with active balancing technology. With a cycle life of at least 3500 cycles at 80% DOD, it provides long-term reliability for off-grid and solar photovoltaic systems.

Key Performance Metrics

Key Performance Metrics

10.24 KWH

Rated Capacity

3500 cycles

Cycle Life (80% DOD)

32 pcs

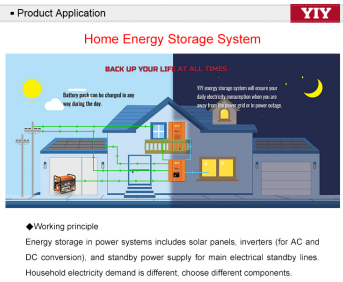
Internal Cells

Technical Specifications

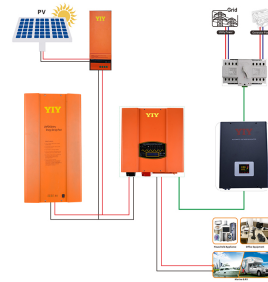
Model Comparison

Parameter	LFP24400H	LFP48200H
Rated Voltage	25.6V	51.2V
Rated Capacity	400Ah	200Ah
Cell Configuration	8S4P	16S2P
Max Charge Voltage	28.4±0.2V	56.8±0.4V
Output Voltage Range	20~28Vdc	40~56Vdc
Rated Discharge Current	400A	200A

Applications



Working principle of the home energy storage system integrated with solar panels and inverters.



Complete system setup showing battery pack connectivity with PV panels, grid, and household appliances.

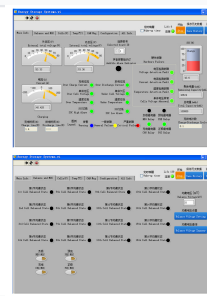
Primary Applications

- Solar/Photovoltaic energy storage
- Home energy storage systems (ESS)
- Communication base stations
- Data center backup power
- Commercial and industrial backup
- Marine and RV independent power supply

Battery Management & Safety



Real-time monitoring software showing individual cell voltages and system protection parameters.

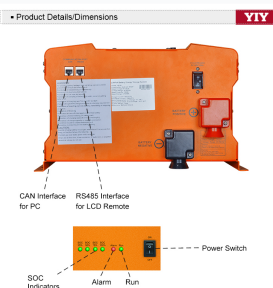


User interface displaying SOC, current, and relay status for comprehensive system diagnostics.

BMS & Safety Features

Intelligent BMS, Active Balancing, Overcharge Protection, Over-discharge Protection, Temperature Monitoring, Automatic Calibration

Connectivity & Interface



Detailed view of the communication ports (CAN/RS485), SOC indicators, and DC circuit breaker.

Communication Interfaces

- CAN Port (PC control and monitoring)
- RS485 Port (LCD remote connection)
- Master & Slave parallel support
- Mobile APP monitoring (Optional)

Physical & Environmental

IP Protection

IP31

Charging Temp Range

0~45°C

Discharging Temp Range

-20~60°C

Dimensions (H*W*D)

850 * 550 * 187 mm

Net Weight

100 kg

Compliance

Certifications

CE, TUV, UN38.3, MSDS