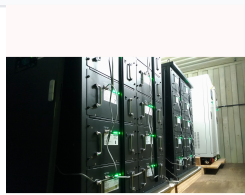
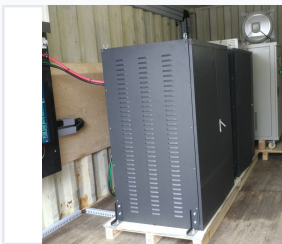


100kWh LiFePO4 Battery Energy Storage System

This energy storage system is designed for business use. It provides reliable and efficient energy storage, utilizing Lithium Iron Phosphate (LiFePO4) battery technology for enhanced safety and longevity.



ADDITIONAL IMAGES



Overview



Robust ventilated cabinet housing multiple modular battery units for commercial energy storage.

Commercial LiFePO4 Energy Storage Solution

This 100kWh-class LiFePO4 Battery Energy Storage System is engineered for high-demand business and commercial applications. It provides a robust and scalable solution for integrating renewable energy, managing peak loads, and ensuring reliable backup power. Utilizing advanced Lithium Iron Phosphate technology, the system offers superior safety, a long cycle life, and efficient energy management for modern power infrastructures.

Core Performance

Key Performance Metrics

102.4 kWh

Total System Energy

1000 Ah

Rated Capacity

51.2 V

Nominal Voltage

6000 Cycles

Cycle Life (@80% DOD)

Battery Technical Specifications

Battery Detailed Parameters

Parameter	Value
Item Number	ESS-102.4KWH
Battery Configuration	5.12KWH * 20PCS (Modular)
Cell Specification	3.2V 50Ah (320 PCS)
Rated Charge Voltage	56.0V DC
Rated Charge Current	500A
Discharge Voltage Range	42V - 54V

Connectivity & Management

Communication Protocols

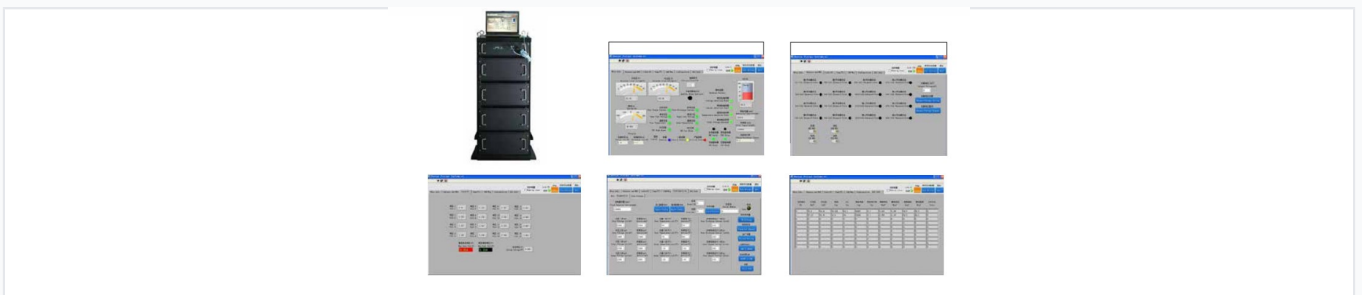
RS485, CAN, PC Monitor Support, LCD Interface

Environmental & Safety

Operating Temperature

- Charge Temperature: 0 ~ 45
- Discharge Temperature: -20 ~ 60

System Features



Designed for seamless integration with existing power infrastructure and renewable sources.

System Capabilities

Pure Sine Wave • Modular Design • Scalable • BMS Integrated • Peak Shaving • Renewable Integration

Physical Characteristics

Module Dimensions	440 * 400 * 132 mm (per module)
Module Weight	45 kg