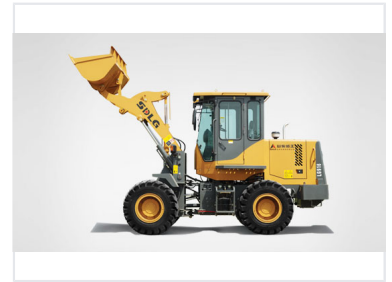


1-Ton Compact Wheel Loader

The 1-ton wheel loader is a compact construction machine for efficient material handling. It features a robust hydraulic system, delivering high lifting capacity and precise control.



Overview

Compact Power and Efficiency

This 1-ton compact wheel loader is engineered for high-performance material handling in confined spaces. It features a reliable, fuel-efficient engine and an optimized hydraulic system that maximizes breakout force and productivity. Designed with operator comfort and safety in mind, the spacious, fully-closed cab provides excellent visibility and ergonomic control, making it an ideal solution for versatile construction, landscaping, and agricultural tasks.

Performance

Performance Highlights

1 ton

Rated Load

Rated Load Capacity

1 ton

Engine & Powertrain

Engine Characteristics

- Low noise operation
- Low fuel consumption
- Reliable performance
- Extended service life

Transmission

Single-stage, single-phase, three-element hydraulic torque converter with axis-fixed gearbox

Hydraulics & Steering

Steering Type

Load sensing hydraulic steering system

Frame Construction

Single-plate rear frame, Four-plate front frame, Joint bearings

Braking & Safety

Safety Attributes

High brake power • Convenient maintenance • Reliable operation

Braking Mechanism

Double-booster pump air over caliper disc brake

Operator Environment

Cabin Specifications

- Spacious and bright design
- Fully-closed structure
- Broad field of vision
- Comfort-focused ergonomic environment