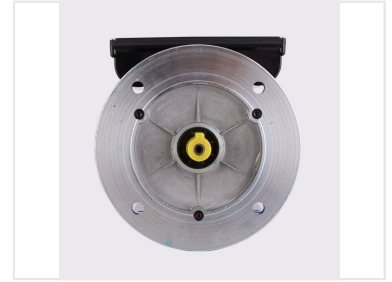
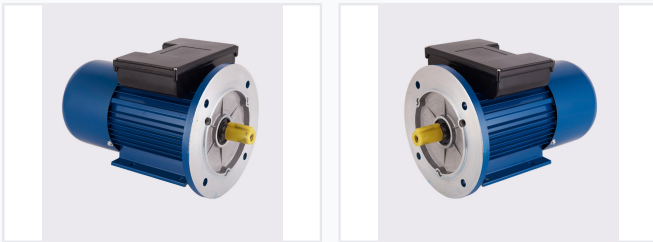


1 HP Single-Phase Electric Motor

This single-phase electric motor adheres to international standards, ensuring stable operation and easy maintenance. It is commonly used in agricultural machinery and other applications requiring reliable rotational power.



ADDITIONAL IMAGES



Product Overview

High-Efficiency Electric Motor

This 1 HP single-phase electric motor is engineered for reliable rotational power in a wide range of industrial and mechanical applications, including pumps, fans, and compressors. Featuring a robust, finned housing for optimized heat dissipation and 100% copper windings, the motor ensures long-lasting performance and efficiency. It is designed for easy installation via integrated flange mounts and a keyed shaft, making it a versatile choice for modern machinery.

Technical Specifications

Rated Power	1 HP
Winding Material	100% Copper

Compliance & Quality

Efficiency Standards

IE1 • IE2

Certifications	CCC, CE, ISO 9001:2015
----------------	------------------------

Installation Options

Available Mounting Types

- B3
- B5
- B35
- B14
- B34