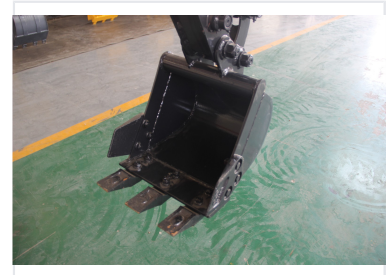


## 0.8 Ton Mini Excavator

This compact mini excavator is designed for agricultural and small-scale construction tasks. With an operating weight of 0.8 tons, it offers a balance of power and maneuverability.



### ADDITIONAL IMAGES



### Overview



#### Compact and Efficient Mini Excavator

This 0.8-ton mini excavator is engineered for high efficiency in agricultural and small-scale construction environments. Its compact design allows for flexible operation in confined spaces, while the integration of imported hydraulic components ensures stable performance and a low failure rate. Designed for versatility, it offers reduced fuel consumption without compromising on digging power.

### Key Performance Metrics

#### Performance Highlights

**0.8 Tons**

Operating Weight

**1480 mm**

Max Digging Depth

**2685 mm**

Max Digging Height

**0.025 m<sup>3</sup>**

Bucket Capacity

## Technical Specifications

### Detailed Dimensions & Capacity

Parameter	Value
Operating Weight	700 KG
Bucket Width	320 mm
Boom Length	1350 mm
Stick Length	700 mm
Max Digging Radius	2612 mm
Max Unloading Height	1850 mm
Bulldozer Width x Height	900 x 210 mm

## Core Components



### Hydraulic System

- Imported Hydraulic Pump
- Eaton Motor
- Shimadzu Hydraulic System
- Hydraulic Lifting Capability

### Engine Options

High Output Engine, Stable Performance, Low Fuel Consumption

## Chassis & Mobility

### Terrain Capability

Steep Terrain Ready • Durable • High Grip

### Track System

Professional steel wire rubber tracks for firm grip and wear resistance

## Design Features

### Key Advantages

- Inner tank type structure for easy maintenance
- Simple installation process
- Small and exquisite body for flexible operation
- High utilization rate across wide environments