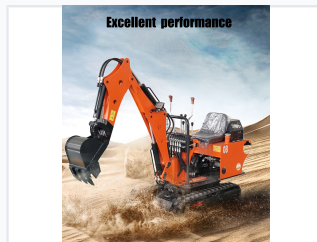


0.8 Ton Hydraulic Crawler Excavator

This 0.8 ton hydraulic crawler excavator is designed for efficient digging and excavation in confined spaces. The compact size and crawler tracks provide excellent maneuverability and stability on various terrains.



ADDITIONAL IMAGES



Overview



A compact 0.8-ton hydraulic excavator designed for maneuverability in tight workspaces.

Versatile 0.8 Ton Excavation Power

This compact 0.8-ton hydraulic crawler excavator is engineered for high performance in confined spaces. Featuring robust construction with high-quality imported components, it offers stable operation, low failure rates, and reduced fuel consumption. Its flexible design makes it ideal for a wide range of applications including landscaping, construction, and agricultural tasks.

Technical Specifications

Operating Weight	700 KG
Bucket Capacity	0.025 m ³
Maximum Digging Depth	1480 mm
Maximum Digging Radius	2612 mm
Maximum Digging Height	2685 mm

Components & Performance

DETAIL ANALYSIS



Detailed analysis showing the robust steel wire rubber tracks and efficient hydraulic lifting capabilities.



Optional engine

Chang Chai Yanmar

Shimadzu Hydraulic System

Eaton Motor

- Powerful
- Powerful rotation
- Worry-free homework

Visualization of high-quality hydraulic system and motor integration for reliable performance.

Performance Features

- Compact inner tank structure for easy maintenance
- High fuel efficiency
- Durable tracks with high wear resistance for steep terrain
- Intuitive controls for precise operation

Core Components

Imported Hydraulic Pump, Eaton Motor, Shimadzu Hydraulic System, Steel Wire Rubber Tracks