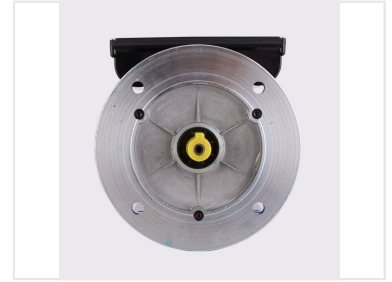
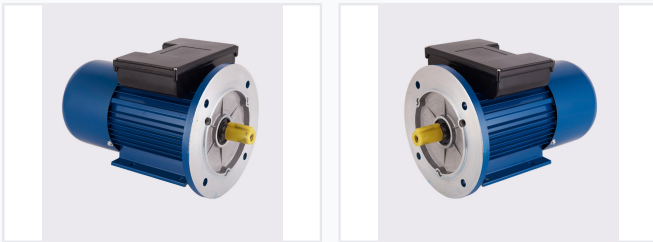


# 0.75kW Single Phase AC Induction Motor

This 0.75kW single-phase AC induction motor is designed for reliable and efficient power conversion. It features a robust construction with a finned or ribbed housing for efficient heat dissipation and a flange mount for secure installation.



## ADDITIONAL IMAGES



## Product Overview

### YL Series Induction Motor

The YL series is a high-performance single-phase asynchronous motor designed for stability, efficiency, and ease of maintenance. Built to international IEC standards, it features a dual-capacitor design for reliable starting and running. With robust construction and low-noise operation, it is an ideal solution for agricultural machinery and general industrial applications.

## Performance Metrics

### Rated Power

**0.75 kW**  
Power Output

### Rated Voltage

220V

### Frequency

50 Hz

## Technical Specifications

### Available Frame Sizes

- 80
- 90
- 100
- 112
- 132

### Insulation Class

B

### Protection Class

IP44

### Mounting Configurations

B3, B5, B35, B14, B34

## Compliance & Quality

### Certifications

CCC • CE • ISO 9001:2015

### Standards Met

IEC, IE1, IE2, GB/T19001-2006

## Construction

### Material Composition

100% copper wire windings