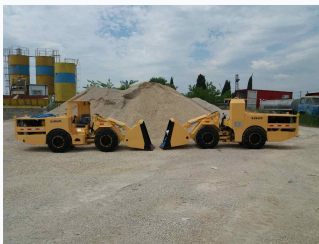


# 0.6 cu.m Underground Wheel Loader

This underground wheel loader has a 0.6 cubic meter bucket and a 1.2-ton loading capacity. Its articulated steering system provides maneuverability in confined spaces.



## ADDITIONAL IMAGES



## Product Overview

### Compact Underground Power

The 0.6 cu.m underground wheel loader is specifically engineered for high-performance operation in narrow tunnels and confined mining environments. Combining a robust 1.2-ton loading capacity with an articulated design, it provides exceptional maneuverability without sacrificing power. Built for longevity and reliability, this machine utilizes premium engine and hydraulic components to ensure consistent productivity in demanding underground conditions.

## Key Performance Metrics

### Operating Capacity

**0.6 m3**

Bucket Volume

**1.2 ton**

Loading Capacity

**42 kN**

Max Shovel Force

## Technical Specifications

### Mechanical Data

Feature	Specification
Engine Power	47.5 kW
Operating Mass	5000 kg
Turning Radius (Inner)	1780 mm
Offload Height	1015 mm

## Compliance and Quality

### Industry Certifications

CE, QS9001, Mining Certificate

## Maintenance and Logistics

### Shipping Information

- Packaging: 20' GP container
- Production lead-time: 15-35 days
- Parts delivered with machine to site