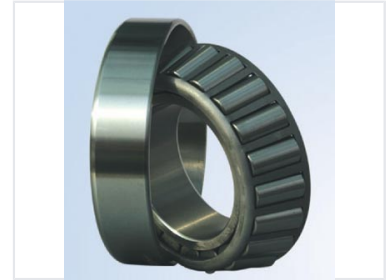


# Wind Generator

Wind generators harness wind energy to produce electricity. They are used in various applications to generate power from the wind.



## Product Overview

### High-Efficiency Wind Generator Components

This advanced wind generator assembly features precision-engineered tapered roller bearings designed to withstand rigorous operational demands. By accommodating both high radial and axial loads, these components ensure optimal mechanical stability and reduced friction during energy conversion. Their durable, separable design facilitates simplified maintenance and installation, making them ideal for heavy-duty wind turbine gearboxes.

## Technical Specifications

### Core Advantages

- Optimized geometry for efficient load transfer
- Reduced friction through precise rolling motion
- Separable components for easy maintenance
- High-speed operational capability

Bearing Type	Tapered Roller Bearing
Load Capability	High Radial Load, High Axial Load

## Application Suitability

### Suitable Industries

Wind Energy • Automotive • Heavy Machinery