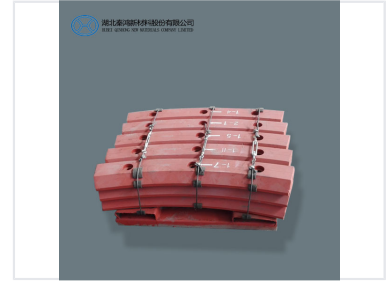
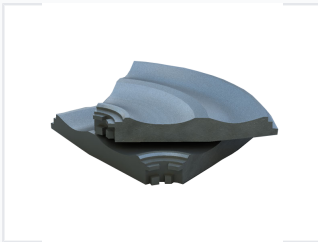


Vertical Roller Mill Table Liner

This high chrome cast iron table liner is designed for vertical roller mills. It provides a durable wear surface, optimizing grinding efficiency and extending the lifespan of the mill table.



ADDITIONAL IMAGES



Product Overview

Industrial Grinding Efficiency

These vertical roller mill table liners are engineered for high-performance grinding in cement and power industries. Constructed from high-chromium cast iron, they offer superior abrasion resistance and impact strength compared to standard parts. Designed to optimize grinding efficiency, they provide a reliable, durable surface that extends the lifespan of mill tables in demanding mining and production environments.

Technical Compatibility

Compatible Mill Types

FL Smidth ATOX, Loesche LM, MPS, RM, CKP, MLS, MPF, TRM, HRM, ZGM, HP

Performance & Material

Lifespan Improvement

10 %

Increased Lifespan

Material

High-chromium cast iron

Global Reach

Exported Regions

- Russia
- Germany
- Pakistan
- Costa Rica
- Argentina
- Greece
- Denmark
- Colombia
- Far East