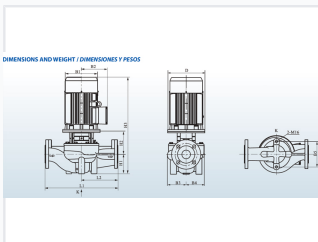


Vertical Inline Centrifugal Pump for Fire Fighting and Water Supply

This vertical inline centrifugal pump is designed for fire fighting and water supply. It features a stainless steel impeller and anti-corrosive coating.



ADDITIONAL IMAGES



Product Overview

High-Efficiency Vertical Inline Pump

This vertical inline centrifugal pump is engineered for demanding applications including fire fighting, water supply, and industrial pressure boosting. Featuring a space-saving vertical design, the unit utilizes a high-efficiency motor and robust corrosion-resistant materials to ensure reliable, long-term operation. With models supporting capacities up to 5000 US GPM, it is an ideal solution for water circulation and irrigation systems requiring consistent performance.

Performance Specifications

Flow Capacity Range	80-5000 US GPM
Maximum Flow	630 m ³ /h
Maximum Head	85 m
Power Range	1.1-132 kW (1.5-180 hp)

Technical Standards

ADVANTAGES

Eight Characteristics



Energy-saving Certificate



Large Flow Capacity



YE3 Motor IP55 Class F All Copper Wire



Stainless Steel 304 Impeller & Shaft



Anti-corrosive Coating



NSK Bearing



Customized Sizes & Pumps



Good Quality & Service 2-Years Guarantee

Operating Limits

16 bar

Max Working Pressure

120 °C

Max Liquid Temp

50 °C

Max Ambient Temp

Service Duty

Continuous Service S1

Applicable Standards

EN733, IP55 Protection, Class F Insulation

Construction & Materials

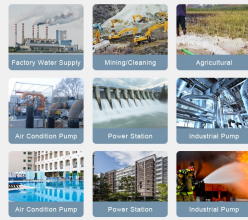


Key Components

Component	Material
Impeller	Stainless Steel AISI 304 or Brass/Cast Iron
Shaft	Stainless Steel AISI 304 or Galvanized Iron
Pump Case	Cast Iron with Anti-Corrosive Coating
Bearings	High-Quality NSK

Applications

APPLICABLE SCENARIO



Recommended Applications

- Fire fighting sets
- Water supply and distribution
- Pressure boosting systems
- Industrial water circulation
- Agricultural irrigation
- Climatisation (HVAC) systems