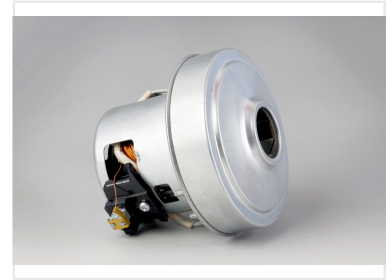
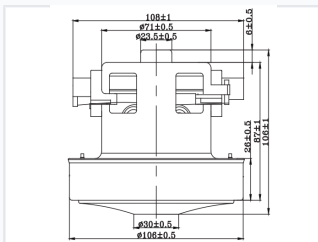


Vacuum Cleaner Motor

This vacuum cleaner motor is designed for powerful suction and efficient operation. It features robust construction with copper windings for enhanced conductivity and long-lasting performance.



ADDITIONAL IMAGES



Product Overview

High-Performance Vacuum Motor

The HWX-CG46 is a specialized dry-use vacuum cleaner motor engineered for high suction efficiency and robust thermal management. Built with quality copper windings and a durable metal housing, this motor ensures reliable electrical contact and long-lasting performance. It is designed for seamless integration into various vacuum models, providing optimal cleaning power across diverse industrial or residential applications.

Electrical Specifications

| | |
|-----------------|----------|
| Rated Voltage | 100-240V |
| Rated Frequency | 50 Hz |

Performance Metrics

Power and Suction Performance

| Input Power (W) | Max Vacuum (Kpa) | Max Airflow (m³/min) |
|-----------------|------------------|----------------------|
| 600 | 15 | 2.2 |
| 800 | 19 | 2.4 |
| 1000 | 20 | 2.6 |

Efficiency

47 %
Max Suction Efficiency

Operational Characteristics

| | |
|------------------|--------|
| Noise Level | <92 dB |
| Spark Grade | < 2 |
| Temperature Rise | 115 K |

Dimensions

| | |
|---------------------|--|
| Key Dimensions (mm) | Height: 108±1, Base Diameter: 106±0.5, Middle Diameter: 71±0.5, Top Diameter: 23.5±0.5 |
|---------------------|--|