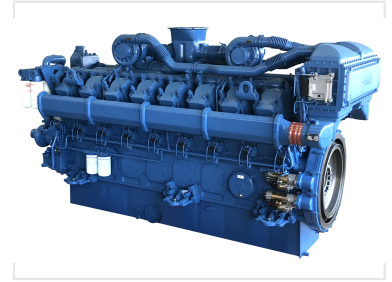


V16 Diesel G-Drive Engine 2005-2646 kW

The V16 diesel G-drive engine provides a power output of 2005-2646 kW. It is suitable for prime power, standby power, and combined heat and power (CHP) systems.



Overview

High-Performance Diesel G-Drive Engine

This V16 series diesel engine is engineered for demanding power generation applications, delivering a robust output range of 2005 to 2646 kW. Featuring advanced electronic unit pump and four-valve combustion technologies, it provides exceptional fuel efficiency, reduced emissions, and high-quality load response. The reinforced engine body design ensures high stiffness and vibration control, while specialized crankshaft forging processes offer superior wear resistance for extended service intervals.

Technical Performance

Power Output Specifications

Engine Model	Prime kW	Standby kW
YC16VC3000-D31	2005	2206
YC16VC3300-D31	2205	2426
YC16VC3600-D31	2405	2646

Performance Grade

G3

Rated Speed

1500 RPM

Design & Construction

Key Engineering Features

- Electronic unit pump system
- Four-valve cylinder structure
- Turbocharged and intercooled
- One head per cylinder design
- Reinforced grid engine body

Maintenance

Maintenance Design

Side-mounted maintenance windows and individual cylinder head design for simplified service access.