

## Underwater LED Light for Marine Use

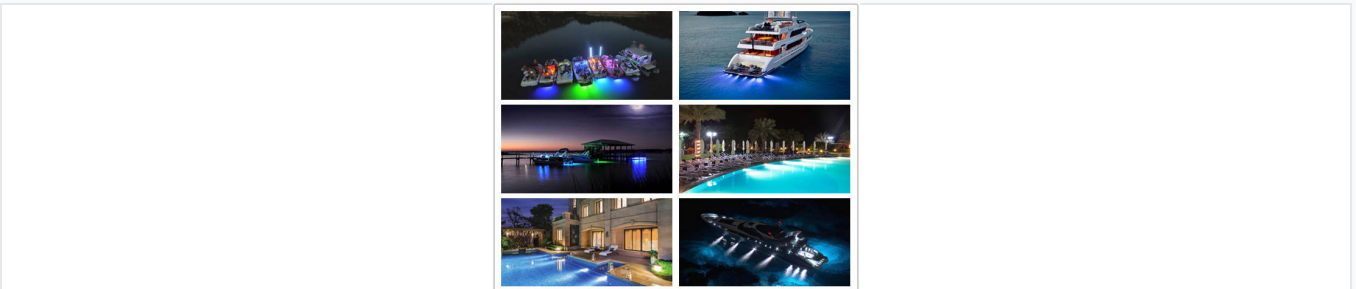
This underwater LED light is designed for marine applications such as submarines, yachts, and boats. It features a 316L stainless steel shell for excellent corrosion resistance and utilizes high-power LEDs for efficient illumination.



### ADDITIONAL IMAGES



### Overview



Enhance the aesthetic appeal and safety of your yacht with powerful underwater illumination.

### High-Performance Marine Illumination

This high-intensity underwater LED light is engineered specifically for demanding marine environments such as yachts, boats, and submarines. Featuring a robust 316L stainless steel housing and a tempered glass cover, it provides exceptional corrosion resistance and durability. With power options of 27W and 45W, it delivers high luminous efficiency to enhance underwater visibility, safety, and aesthetic appeal.

## Technical Specifications



High-intensity output provides clear visibility and stunning visual effects underwater.



Available in multiple power configurations to suit different depth and brightness requirements.

### Power Rating

- 27W
- 45W

### Operating Voltage

**12 VDC**

Input Voltage

### Service Life

50000 hours

## Construction & Durability



The 316L stainless steel housing ensures maximum corrosion resistance in salt-water environments.



IP68 waterproof rating makes it ideal for continuous submersion.

### Waterproof Grade

IP68

### Housing Material

316L Stainless Steel

### Cover Material

Tempered Glass

### Resistance Properties

Corrosion-proof, Waterproof, Shake-proof, Rust-proof

## Installation & Application



Easy wall-mount installation suitable for various marine vessels and docks.

### Recommended Applications

- Yachts and Boats
- Submarines
- Docks and Ponds
- Swimming Pools
- Fountains

**Mounting Type**

Wall Mounted

## Commercial Advantages

**Buyer Benefits**

OEM & ODM Available, No MOQ, Fast Delivery, Online Payment Support