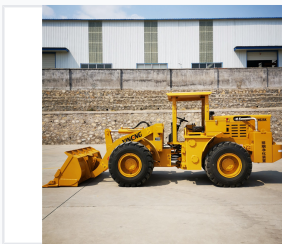


Underground Mining Loader

This underground mining loader is designed for efficient material handling in confined spaces. It features a compact design, a powerful hydraulic system, and a durable bucket.



ADDITIONAL IMAGES



Product Overview

Robust Underground Mining Performance

The YN926K underground mining loader is engineered for high-efficiency material handling in confined environments. It features a powerful diesel engine with an integrated exhaust purification system, ensuring both high performance and environmental compliance. Designed with safety and durability in mind, the machine includes a high-strength protective shed and a load-sensing hydraulic steering system for superior maneuverability.

Performance Metrics

Rated Load

2000 kg
Rated Load

0.7 m3
Bucket Capacity

55 kN
Max Breakout Force

Technical Specifications

General Dimensions

Dimension	Value
Overall Length/Width/Height	5760 x 1910 x 2370 mm
Operating Weight	6000 kg
Dumping Height	2220 mm

Engine & Power

- Engine Type: LR4B3-G92X1A-U2
- Rated Power: 60kW @ 2200rpm
- Equipped with smoke exhaust purification device

Tires 16/70-20

Operational Features

Operational Capabilities

Load Sensing Steering, Single Pump Split Flow Hydraulic System, High-Strength Protective Shed, 30° Grade Ability