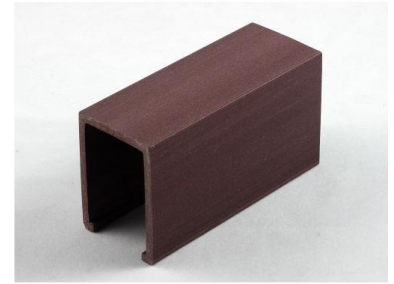


# U-Shaped Composite Channel Profile

This U-shaped channel profile is made from a composite material. It features a rectangular cross-section with a central open channel, designed for sliding or guiding applications.



## Product Overview

### U-Shaped Composite Channel Profile

This U-shaped composite channel profile is engineered for precision sliding and guiding applications, making it an ideal choice for track and rail systems. Featuring a textured, wood-grain-like surface finish, it offers both aesthetic appeal and robust material performance. The design includes a rectangular cross-section with a central open channel and protective side lips for secure engagement.

## Physical Characteristics

|                 |                   |
|-----------------|-------------------|
| Shape Type      | U-Shaped          |
| Surface Texture | Wood-grain effect |

## Design Features

|              |  |
|--------------|--|
| Key Features | Rectangular cross-section, Central open channel, Integrated side lips, Sliding track application |
|--------------|--|

## Application

### Recommended Use

- Linear guide rails
- Sliding door mechanisms
- Component housing
- Edge protection