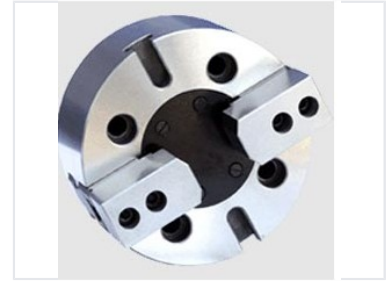


# Two-Jaw Wedge Power Chuck

This two-jaw wedge power chuck is a precision workholding device for high-performance machining. Its wedge-style actuation provides exceptional gripping force and accuracy for various turning operations.



## Product Overview

### High-Performance Workholding

The K50 two-jaw wedge-type power chuck is a precision-engineered workholding device designed for demanding industrial machining applications. Featuring a robust wedge-style actuation mechanism, this chuck delivers exceptional gripping force and high accuracy for heavy cutting and high-speed operations. Its compact, self-centering design minimizes vibration and ensures consistent workpiece positioning, making it an ideal solution for efficient material removal in professional turning environments.

## Technical Specifications

Construction Material	Hardened Steel
Actuation Mechanism	Wedge-style

## Performance Metrics

### Key Performance Metrics

**2 Jaws**

Jaw Count

**1 Self-Centering**

Centering Type

## Features & Capabilities

### Design Advantages

- Precision ground surfaces for accuracy
- Compact design for efficient footprint
- Optimized jaw configuration
- Vibration reduction technology

Suitable Applications	High-Speed Turning, Heavy Cutting, Precision Machining, Industrial Manufacturing
-----------------------	--