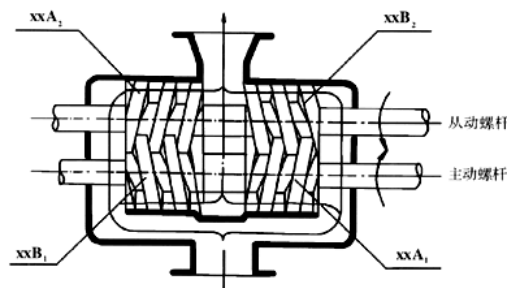


Twin Screw Positive Displacement Pump

This twin screw pump delivers stable fluid transfer without pulsation and operates with low vibration and noise. It is designed with an external bearing structure and independent lubrication, enabling it to convey various non-lubricating media.



Product Overview

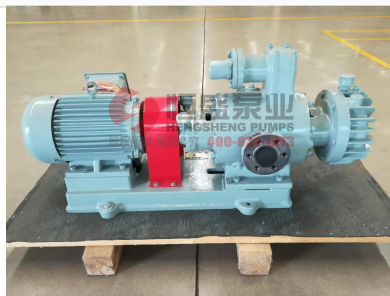


Working principle diagram illustrating fluid transfer between intermeshing screws.

High-Performance Twin Screw Pump

This positive displacement twin screw pump is engineered for stable, pulsation-free fluid transport in demanding industrial environments. It features a robust double-suction design that eliminates axial rotor force and utilizes external, independently lubricated bearings to handle non-lubricating media. With integrated heating sleeves and advanced mechanical sealing, it provides reliable performance for a wide range of liquids, including high-viscosity media and those containing small solid particles.

Operational Capabilities



Complete pump unit featuring a motor coupling and heavy-duty base construction.

Multiphase Handling	Oil and gas mixture compatible, Self-absorption capable, Gas content up to 80%, Sand content up to 500g/m ³
Max Particle Diameter	0.2 mm

Technical Specifications



Exploded view showing the precision-engineered screws, housing, and sealing components.

Seal Type

- Mechanical seal
- Bellows mechanical seal

Bearing Arrangement

External, independently lubricated

Application Areas

Key Industries

Oil & Gas • Shipbuilding • Petrochemical • Chemical Processing