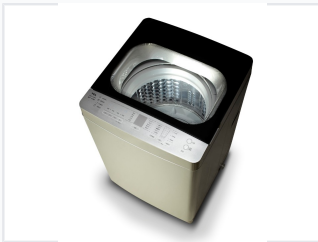


# Top Loading Laundry Washing Machine

This top loading washing machine features air dry, a touch LED display, and smart unbalance protection. It also includes a honeycomb crystal drum, child lock, 24-hour delay, fuzzy logic, and a magic filter.



## ADDITIONAL IMAGES



## Product Overview

<p>Top load washing machine F03 Series</p> 	<p><b>Feature:</b> Air dry Touch LED display Memory of power Smart unbalance protection Honeycomb crystal drum Child lock 24 hour delay Fuzzy logic Magic filter</p> <p><b>Specification:</b> Number of knob programs: 8 Water level: 10 Size: 566-566-922 Capacity: 7kg/8kg Loading(40HQ): 198/141</p>	
------------------------------------------------------------------------------------------------------------------------------------	-----------------------------------------------------------------------------------------------------------------------------------------------------------------------------------------------------------------------------------------------------------------------------------------------------------------------------------------------------------------	--

A detailed overview of the F03 Series features including drum technology and control settings.

## Advanced Laundry Solutions

The F03 Series top-loading washing machine is designed to offer maximum efficiency and convenience for modern laundry needs. Featuring a honeycomb crystal drum and intelligent fuzzy logic control, it ensures thorough cleaning while protecting fabrics. The machine includes a range of smart features like smart unbalance protection and memory of power, making it a reliable and versatile choice for professional environments.

## Key Features

### Standard Features

Air dry, Touch LED display, Memory of power, Smart unbalance protection, Honeycomb crystal drum, Child lock, 24 hour delay, Fuzzy logic, Magic filter

## Technical Specifications

### Operational Metrics

**8 count**

Knob Programs

**10 levels**

Water Levels

### Physical Dimensions

Specification	Value
Dimensions (W*D*H)	566 x 566 x 922 mm
Capacity	7kg / 8kg
Loading Capacity (40HQ)	198 / 141 units